

USER'S GUIDE



USB 2.0 Mobile Docking Station



Copyright® TRENDware International, Inc. 2004. All Rights Reserved.

Index

1. INTRODUCTION	3
1.1 FEATURES AND SPECIFICATIONS.....	3
1.2 SYSTEM REQUIREMENTS.....	3
1.3 PACKAGE CONTENTS.....	3
1.4 CONNECTORS.....	4
1.5 AVAILABLE FUNCTIONS.....	4
1.6 LED INDICATORS.....	5
2. INSTALLING USB 2.0 MOBILE DOCKING STATION	5
2.1 DRIVER INSTALLATION.....	6
2.1.1 Win98/98SE Driver Installation.....	6
2.1.2 WinME Driver Installation.....	16
2.1.3 Win2000 Driver Installation.....	18
2.1.4 WinXP Driver Installation.....	22
2.2 THINGS YOU NEED TO KNOW.....	24
2.3 SET UP THE PRINTER DEVICE.....	26
2.3.1 For Windows 98/SE/ME.....	26
2.3.2 For Windows 2000/XP.....	28
2.4 SET UP THE HYPERTERMINAL WITH USB TO SERIAL PORT.....	29
3. UNINSTALLING USB 2.0 MOBILE DOCKING STATION	31
3.1 REMOVE THE DEVICE.....	31
3.2 UNINSTALL THE DRIVER.....	31
3.2.1 For Windows 98/SE/ME.....	31
3.2.2 For Windows 2000/XP.....	32
4. APPLICATION NOTE	34
5. TRENDWARE LIMITED WARRANTY	35

1. Introduction

Thank you for ordering the USB 2.0 Mobile Docking Station. The USB 2.0 Mobile Docking Station is an intelligent expansion module, which connects to a PC or notebook via the Universal Serial Bus (USB) port, providing one high-speed RS-232 serial port, one printer port, one PS/2 keyboard & mouse, 3 downstream USB2.0 ports and one Ethernet access. The USB 2.0 Mobile Docking Station features easy connectivity for traditional serial devices, keyboards, mice and other USB devices, and provides up to 480Mbps USB2.0 High Speed capability. You can also add one extra Ethernet port to your PC or notebook in seconds.

1.1 Features and Specifications

- Add one high-speed serial port, one printer port, one PS/2 keyboard & mouse, 3 USB 2.0 High Speed downstream ports and one Ethernet port to your PC or notebook in seconds.
- Improve the inconvenience of configuring old PC solutions like card extension solutions, which require adjusting IRQ or jumper settings and the incompatibility of various brands of docking solutions or bus repeaters.
- Avoid the hassle of removing your PC case, or rebooting the operating system during installation.
- Built-in 10/100Mbps Fast-Ethernet and IEEE802.3x flow control functions for 100BASE-TX and 10BASE-T.
- Complies with USB specifications 2.0 (and under), with IEEE802.3u 100BASE-TX and with IEEE802.3 10BASE-T standards.

1.2 System Requirements

1. PC with Pentium series processor, or equivalent
2. Minimum of 16M bytes of RAM
3. One available USB type A downstream port (UHCI, OHCI, or EHCI)
4. Windows 98 or later

1.3 Package Contents

The product you purchased should contain the equipment and accessories shown as follows:

- USB 2.0 Mobile Docking Station
- One 6ft USB AB type cable
- One 2A switching power adapter
- One USB 2.0 Mobile Docking Station Driver and User's Guide CD

1.4 Connectors (Ref. Fig.1)

1. One DB-9 RS-232 serial interface connector supports baud rates from 2,400 to 115.2K.
2. One DB-25 parallel connector supports IEEE-1284 bi-directional printer port.
3. One Mini-din for PS/2 keyboard, mouse.
4. Three USB receptacle, type A downstream ports.
5. One USB type B upstream connector.
6. One RJ45 Ethernet connector.



Fig.1

1.5 Available Functions

The available functions of USB 2.0 Mobile Docking Station depend on the status of the power supplied:

- Bus powered
 1. Connect the USB 2.0 cable to your PC to provide bus power.
 2. When you provide bus power only, the PS/2 mouse & keyboard, RS232, printer and Ethernet ports will be enabled. However, the USB 2.0

Downstream Ports can also work under low power mode, so using the externally power adaptor is recommended. (For the use of all functions)

- Externally powered
 1. Connect the power adapter to provide external power.
 2. When you provide external power, the USB Downstream Ports can support all USB devices, and you can use all the functions of the USB 2.0 Mobile Docking Station.

1.6 LED Indicators (Ref. Fig.2)

- Power Indicator

The Power Indicator will turn RED when only bus power is supplied, and will turn GREEN when external power is supplied.
- USB Indicators
 1. There are three USB indicators. If the USB Downstream Ports are ready for use, the indicators will turn **ON**.
 2. If over-current happens for certain USB Downstream Ports, the corresponding USB Indicator will turn **OFF** to indicate that this port is not working at the moment.
 3. When the over-current situation is resolved, the USB Indicator will turn **ON** again.
- LAN Indicators
 1. Link/Act (Orange): This LED turns on if the 10/100Mbps (100BASE-TX) Ethernet is connected.
 2. Transmission (Green): Blinking to indicate that the data is being received or transmitted through the RJ-45 port.



Fig.2

2. Installing the USB 2.0 MOBILE DOCKING STATION

1. This installation guide is written in accordance with different operation systems including Windows 98/98SE/ME, Windows 2000, and Windows XP.
2. Power on your computer and make sure that the USB port is enabled and working properly.
3. Connect the power adapter into the USB 2.0 Mobile Docking Station. (For all functions)
4. Connect USB 2.0 Mobile Docking Station to the USB port on your computer with the USB 2.0 transfer cable provided.
5. Windows will start detecting USB devices. Please follow the related section to install your USB 2.0 Mobile Docking Station.

2.1 Driver Installation

2.1.1 Win98/98SE Driver Installation

The driver installation is divided into A to F in six-steps. Please install the USB 2.0 Mobile Docking Station under Win98/SE step by step according to the following instructions:

A. USB Hub Installation

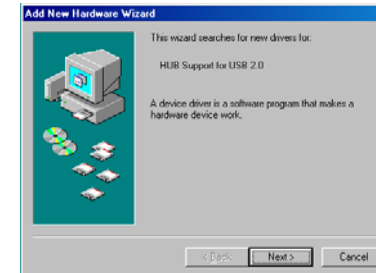


Fig. Win98-A1

A1. Please insert the "Windows 98" CD into your CD-ROM drive and press "Next" to continue. (Ref. to Fig. Win98-A1)



A2. Tick "Search for the best driver for your device" and press "Next" to continue. (Ref. to Fig. Win98-A2)

Fig. Win98-A2



A3. Tick “CD-ROM drive” and press “Next” to start the search process.
(Ref. to Fig. Win98-A3)

Fig. Win98-A3



A4. Press “Next” to start the installation process.
(Ref. to Fig. Win98-A4)

Fig. Win98-A4



A5. Press “Finish” to complete the installation of the USB HUB.
(Ref. to Fig. Win98-A5)

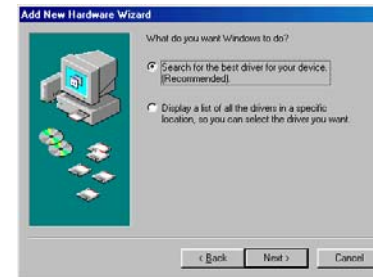
Fig. Win98-A5

B. IEEE-1284 Controller Installation



B1. Please insert the “USB 2.0 MOBILE DOCKING STATION” CD into your CD-ROM drive and press “Next” to continue.
(Ref. to Fig. Win98-B1)

Fig. Win98-B1



B2. Tick “Search for the best driver for your device” and press “Next” to continue.
(Ref. to Fig. Win98-B2).

Fig. Win98-B2



B3. Tick “Specify a location” and click “Browse” to select the location of the driver folder in the “USB 2.0 MOBILE DOCKING STATION” CD. Press “Next” to start the searching process.
(Ref. to Fig. Win98-B3).

Fig. Win98-B3



B4. Press “Next” to start the installation process.
(Ref. to Fig. Win98-B4)

Fig. Win98-B4



Fig. Win98-B5

B5. Press “Finish” to complete the installation of USB-to-Parallel Port. (Ref. to Fig. Win98-B5)

C. USB-to-Serial Port Installation

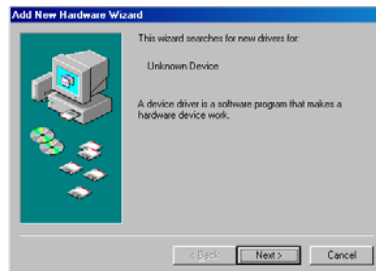


Fig. Win98-C1

C1. Please insert the “USB 2.0 Mobile Docking Station” CD into your CD-ROM drive and press “Next” to continue. (Ref. to Fig. Win98-C1)



Fig. Win98-C2

C2. Tick “Search for the best driver for your device” and press “Next” to continue. (Ref. to Fig. Win98-C2)

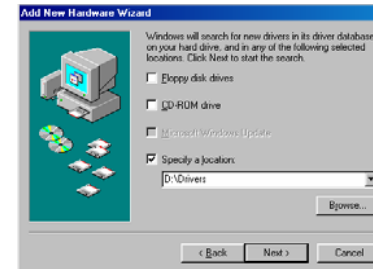


Fig. Win98-C3

C3. Tick “Specify a location” and click “Browse” to select the location of the driver folder in the “USB 2.0 MOBILE DOCKING STATION” CD. Click “Next” to start the searching process. (Ref. to Fig. Win98-C3)



Fig. Win98-C4

C4. Press “Next” to start the installation process. (Ref. to Fig. Win98-C4)

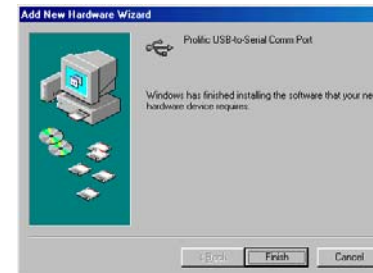


Fig. Win98-C5

C5. Press “Finish” to complete the installation of USB-to-Serial Port. (Ref. to Fig. Win98-C5)

D. USB Composite Device Installation



Fig. Win98-D1

D1. Please insert the “Windows 98” CD into your CD-ROM drive and press “Next” to continue (Ref. to Fig. Win98-D1)



Fig. Win98-D2

D2. Select “Search for the best driver for your device” and press “Next” to continue. (Ref. to Fig. Win98-D2)



Fig. Win98-D3

D3. Select “CD-ROM drive” and press “Next” to start the searching process. (Ref. to Fig. Win98-D3)



Fig. Win98-D4

D4. Click “Next” to start the installation process. (Ref. to Fig. Win98-D4)



Fig. Win98-D5

D5. Click “Finish” to complete the installation of the Composite Device. (Ref. to Fig. Win98-D5)

E. Ethernet Port Installation



Fig. Win98-E1

E1. Please insert the “USB 2.0 Mobile Docking Station” CD into your CD-ROM drive and click “Next” to continue. (Ref. to Fig. Win98-E1)



Fig. Win98-E2

E2. Select “Search for the best driver for your device” and press “Next” to continue.
(Ref. to Fig. Win98-E2)

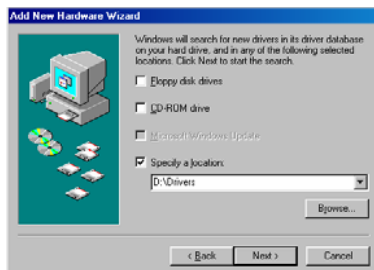


Fig. Win98-E3

E3. Select “Specify a location” and click “Browse” to select the location of the driver folder in the “USB 2.0 Mobile Docking Station” CD. Click “Next” to start the searching process.
(Ref. to Fig. Win98-E3)

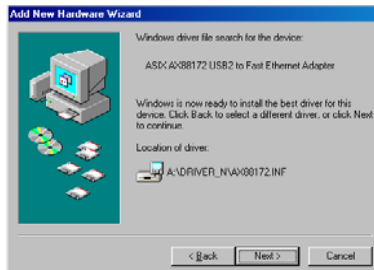


Fig. Win98-E4

E4. Click “Next” to start the installation process.
(Windows might ask you to insert the “Windows 98” CD during the installation process).
(Ref. to Fig. Win98-E4)

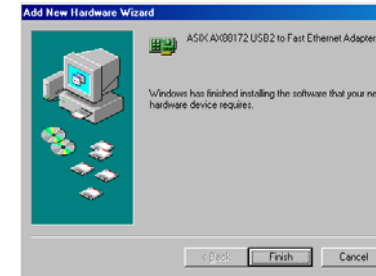


Fig. Win98-E5

E5. Click “Finish” to complete the installation of the Ethernet Port. (It might be necessary to restart Windows).
(Ref. to Fig. Win98-E5)

F. USB HID Device for PS/2 keyboard & mouse Installation

(This step might repeat once for two different devices, mouse and keyboard)



Fig. Win98-F1

F1. Please insert the “Windows 98” CD into your CD-ROM drive and press “Next” to continue.
(Ref. to Fig. Win98-F1)



Fig. Win98-F2

F2. Select “Search for the best driver for your device” and press “Next” to continue.
(Ref. to Fig. Win98-F2)



Fig. Win98-F3

F3. Select “CD-ROM drive” and press “Next” to start the searching process.
(Ref. to Fig. Win98-F3)



Fig. Win98-F4

F4. Click “Next” to start the installation process.
(Ref. to Fig. Win98-F4)



Fig. Win98-F5

F5. Click “Finish” to complete the installation of HID.
(Ref. to Fig. Win98-F5)

2.1.2 WinME Driver Installation

The driver installation for WinME is divided into A to C in three-steps.
Please install USB 2.0 Mobile Docking Station under WinME step by step from the following instructions:

A. USB-to-Parallel Port Installation

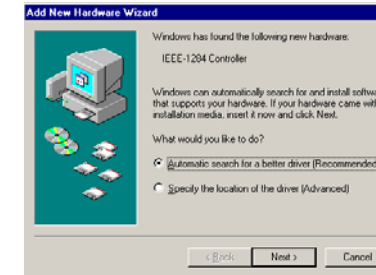


Fig. WinME-A1

A1 Please insert the “USB 2.0 Mobile Docking Station” CD into your CD-ROM drive. Select “Automatic search for a better driver” and press “Next” to continue.
(Ref. to Fig. WinME-A1)

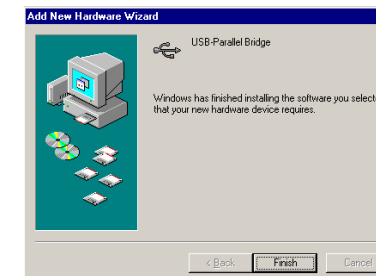


Fig. WinME-A2

A2. Click “Finish” to complete the installation USB-to-Parallel Port.
(Ref. to Fig. WinME-A2)

B. USB-to-Serial Port Installation

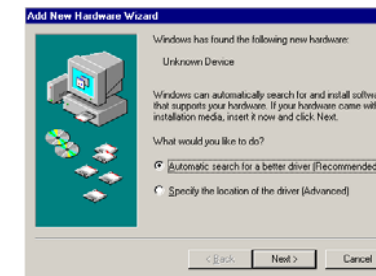


Fig. WinME-B1

B1. Select “Automatic search for a better driver” and press “Next” to continue.
(Ref. to Fig. WinME-B1)



Fig. WinME-B2

B2. Click “Finish” to complete the installation of USB-to-Serial Port.
(Ref. to Fig. WinME-B2)

C. Ethernet Port Installation



Fig. WinME-C1

C1. Select “Specify the location for a better driver” and press “Next” to continue.
(Ref. to Fig. WinME-C1)



Fig. WinME-C2

C2. Select “Search for the best driver for your device” and then choose “Specify a location”. Click “Browse” to select the location of the driver folder in the “USB 2.0 Mobile Docking Station” CD. Press “Next” to continue.
(Ref. to Fig. WinME-C2)

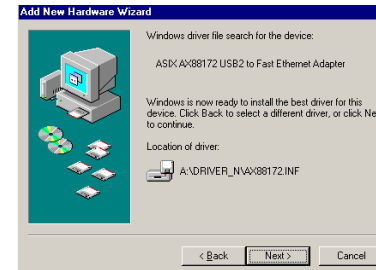


Fig. WinME-C3

C3. Click “Next” to start the installation process.
(Ref. to Fig. WinME-C3)

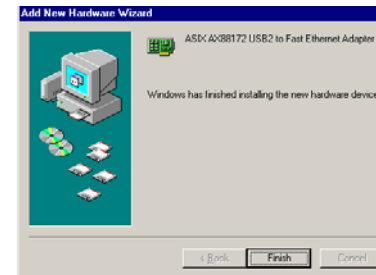


Fig. WinME-C4

C4. Click “Finish” to complete the installation of the Ethernet Port.
(Ref. to Fig. WinME-C4)

2.1.3 Win2000 Driver Installation

The driver installation for Win2000 is divided into A, B in two-steps. Please install the USB 2.0 Mobile Docking Station under Win2000 step by step according to the following instructions:

A. USB-to-Serial Port Installation



Fig. Win2k-A1

A1. Please insert the “USB 2.0 Mobile Docking Station” CD into your CD-ROM drive and click “Next” to continue.
(Ref. to Fig. Win2k-A1)



Fig. Win2k-A2

A2. Select “Search for a suitable driver for my device” and click “Next” to continue.
(Ref. to Fig. Win2k-A2)

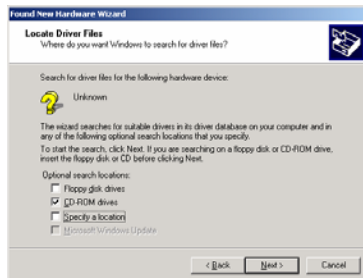


Fig. Win2k-A3

A3. Please insert the “USB 2.0 Mobile Docking Station” CD into your CD-ROM drive and click “Next” to start the searching process.
(Ref. to Fig. Win2k-A3)

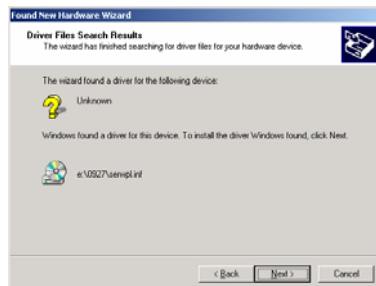


Fig. Win2k-A4

A4. Click “Next” to start the installation process.
(Ref Fig. Win2k-A4)



Fig. Win2k-A5

A5. Click “Finish” to complete the installation of the USB-to-Serial Port.
(Ref. to Fig. Win2k-A5)

B. Ethernet Port Installation



Fig. Win2k-B1

B1. Click “Next” to continue.
(Ref. to Fig. Win2k-B1)

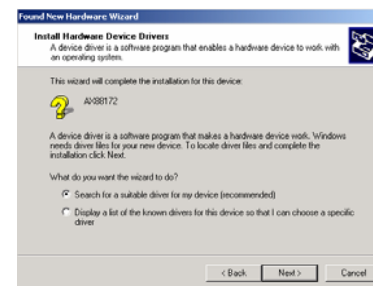


Fig. Win2k-B2

B2. Select “Search for a suitable driver for my device” and click “Next” to continue.
(Ref. to Fig. Win2k-B2)

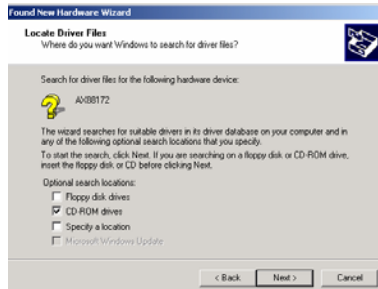


Fig. Win2k-B3

B3. Select “CD-ROM drives” and click “Next” to start the searching process.
(Ref. to Fig. Win2k-B3)

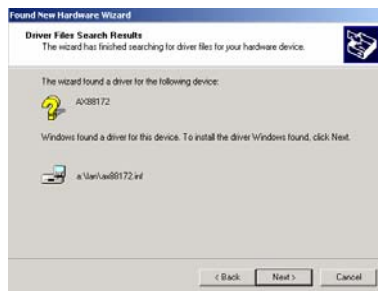


Fig. Win2k-B4

B4. Click “Next” to start the installation process.
(Ref. to Fig. Win2k-B4)

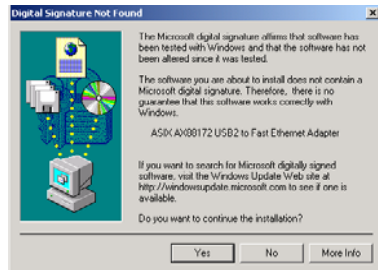


Fig. Win2k-B5

B5. You will receive a message stating that the software you are installing has not passed Windows Logo testing. But this driver is fully compatible with Windows 2000, so just press “Yes” to continue.
(Ref. to Fig. Win2k-B5)



Fig. Win2k-B6

B6. Click “Finish” to complete the installation of the Ethernet port.
(Ref. to Fig. Win2k-B6)

2.1.4 WinXP Driver Installation

Please install USB 2.0 Mobile Docking Station under WinXP step by step according to the following instructions:

A. Serial Port Installation

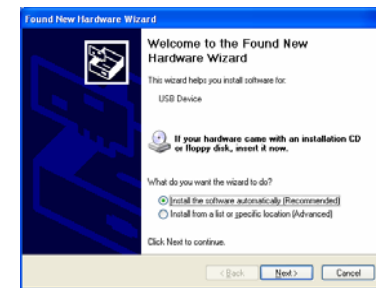


Fig. WinXP-A1

A1. Please insert the “USB 2.0 Mobile Docking Station” CD into your CD-ROM drive. Select “Install the software automatically” and click “Next” to continue
(Ref. to Fig. WinXP-A1)



Fig. WinXP-A2

A2. You will receive a message stating that the software you are installing has not passed Windows Logo testing. But this driver is fully compatible with Windows XP, so just press “Yes” to continue.
(Ref. to Fig. WinXP-A2)

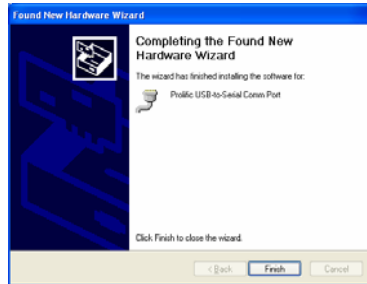


Fig. WinXP-A3

A3. Click “Finish” to complete the installation of the USB-to-Serial Port.
(Ref. to Fig. WinXP-A3)

B. Ethernet Port Installation



Fig. WinXP-B1

B1. Select “Install the software automatically” and click “Next” to continue
(Ref. to Fig. WinXP-B1)



Fig. WinXP-B2

B2. Click “Finish” to complete the installation of the Ethernet Port.
(Ref. to Fig. WinXP-B2)

2.2 Things you need to know

- Before connecting the printer to the parallel port of USB 2.0 Mobile Docking Station, the printer driver must be installed on your computer in advance, otherwise it might print an unknown format of characters.
- Please refer to "Setting up the Printer Device" section to connect your printer to the USB 2.0 Mobile Docking Station.
- For modem users, we advise you to install the modem driver manually before connecting the modem to the converter, otherwise it might operate unexpectedly.
- Please refer to "Setting up the HyperTerminal with USB to serial port" section as an example of routing your COM port setting.

Congratulations!!

You have finished installing USB 2.0 Mobile Docking Station.

Please click on **Start, Settings, Control Panel**, double-click **System**, and **Device Manager**. Please double check “Human Interface Devices”, “Keyboard”, “Mouse”, “Network adapters”, “Ports”, and “Universal serial bus controller” on the dialog box and see if they are working properly. (Ref. Fig.3, 4)

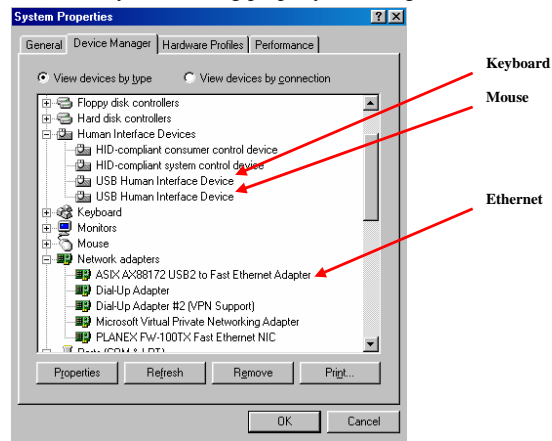


Fig.3

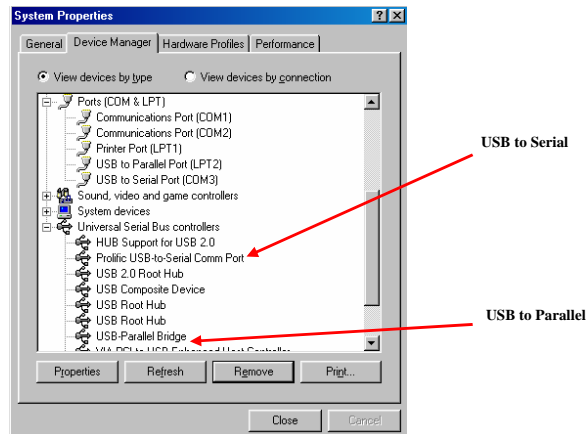


Fig.4

2.3 Setting Up the Printer Device

Follow the steps below to connect your printer to the USB 2.0 Mobile Docking Station with your PC:

2.3.1 For Windows 98/98SE/ME:

1. Connect the USB 2.0 Mobile Docking Station to your printer with the parallel cable and then turn on the printer.
2. Connect the USB 2.0 Mobile Docking Station to the USB port on your computer with the USB 2.0 transfer cable provided.
3. Please go to **Start, Settings, Control Panel**, double click **System**, and **Device Manager**. Check **Ports** on the dialog box and see which printer ports the “USB-to-Parallel Port” is located on. The following example is located as LPT2. (Ref. Fig.5)

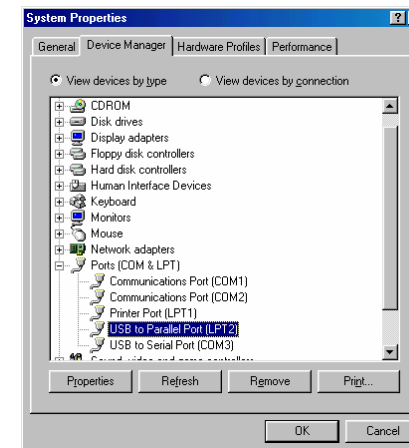


Fig.5

4. If you have installed a printer device before, go to **Start, Settings, and Printers**. Right-click the default-installed printer and choose **Properties**. The Properties dialog box of the installed printer will appear on your screen.

- Click **Details** folder tab and change the printer port to **LPT2: USB-to-Parallel Port**. (Ref. Fig.6)

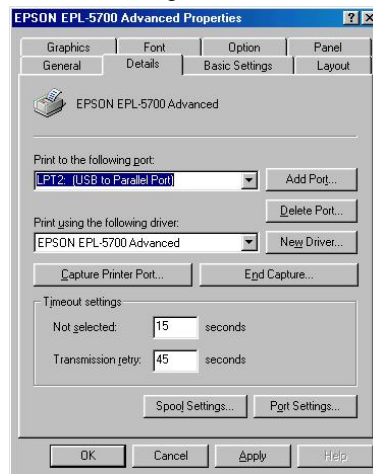


Fig.6

- If you do not have a printer installed yet, go to **Start, Settings, Printers**, and choose **Add Printer**. The **Add Printer Wizard** will start and assist you to install a new printer device. Select the printer manufacturer and model name from the list provided by the wizard or use the printer driver diskette provided with your printer.
- Windows will ask you which port the printer will be used on, choose **LPT2: USB to Parallel Port**. (Ref. to Fig.7)

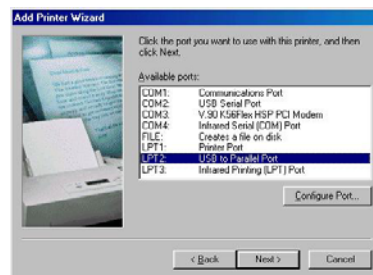


Fig.7

Follow the instructions to complete the installation. Run the **Print Test Page** to see if the printer is working without any problem.

2.3.2 For Windows 2000/XP:

- Connect the USB 2.0 Mobile Docking Station to your printer with the parallel cable and then turn on the printer.
- Connect the USB 2.0 Mobile Docking Station to the USB port on your computer with the USB2.0 transfer cable provided.
- If you have installed a printer device before, go to **Start, Settings, and Printers**. Right-click the default-installed printer and choose **Properties**. The Properties dialog box of the installed printer will appear on your screen.
- Click **Ports** folder tab and change the printer port to **USB001: (Virtual printer port for USB)**. (Ref. to Fig.8)

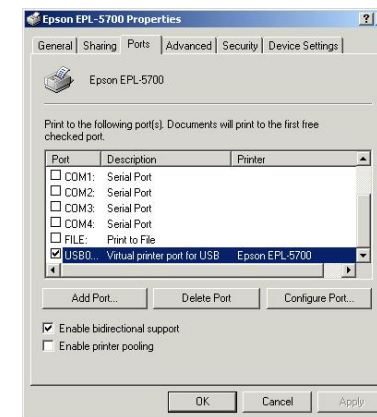


Fig.8

- If you do not have a printer installed yet, click on **Start, Settings, Printers** and choose **Add Printer**. The **Add Printer Wizard** will start and assist you to install a new printer device. Select the printer manufacturer and model name from the list provided by the wizard or use the printer driver diskette provided with your printer.

6. Windows will ask you which port the printer will be used on, choose **USB001: (Virtual printer port to USB)**. (Ref. to Fig.9)

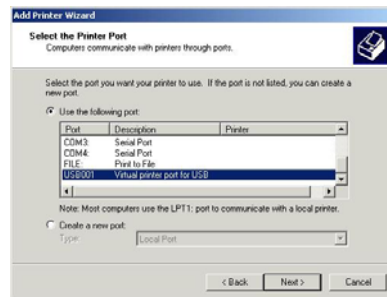


Fig.9

2.4 Setting up the HyperTerminal with the USB to serial port

1. Make sure that the HyperTerminal is installed in your system. If not, please go to **Start, Settings, and Control Panel**. Double click **Add/Remove Programs**, choose **Windows Setup** page, **Communications**, click the **Details** button and enable the **HyperTerminal** to install the program to your Windows system.
2. Go to **Start, Settings, Control Panel**, double click **System**, and click on **Device Manager**. Check which COM port is located by USB to the serial port. (Ref. to Fig.10)

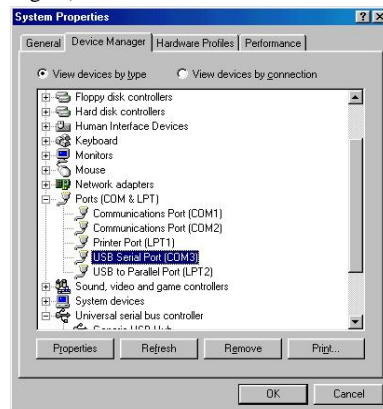


Fig.10

3. If you have set up the HyperTerminal before, please go to **Start, Programs, Accessories, Communications, HyperTerminal**. Click **File** and choose **Properties**. The Properties dialog page will appear on your screen. If it is your first time to setup the HyperTerminal, you will see the following page during the setup procedure. (Ref. to Fig.11)

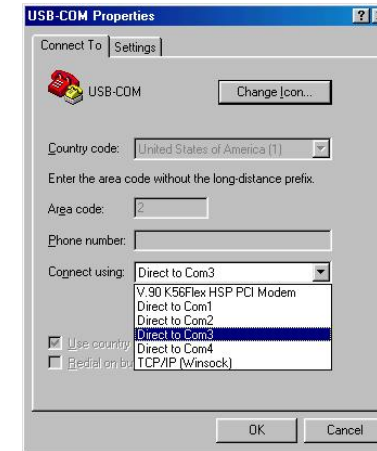


Fig.11

4. Click the **Connect using** item to indicate the proper COM port, which appeared in step 1. Follow the instructions to complete the setup.

3. Uninstalling the USB 2.0 MOBILE

DOCKING STATION

If you want to remove the USB 2.0 Mobile Docking Station and its driver, you can uninstall it by proceeding with the following steps:

3.1 Removing the device

1. Click the “unplug or eject hardware” icon on the lower-right tray. Choose which USB device you want to remove. A message will appear to indicate that you can safely remove the USB 2.0 Mobile Docking Station from the computer.
2. Unplug the USB cable.

3.2 Uninstalling the driver

3.2.1 For Windows 98/SE/ME:

1. Run **Un20DOCK.exe** from the driver folder in USB 2.0 Mobile Docking Station CD.
2. Please Press **OK** to remove Printer Converter. (Ref. to Fig.12)

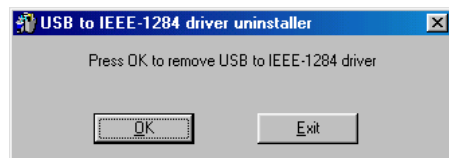


Fig.12

3. Printer Converter had been removed. Please press **Exit** to continue. (Ref. to Fig.13)

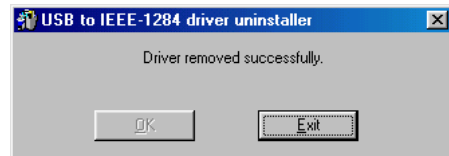


Fig.13

4. Please Press **OK** to remove Serial Converter. (Ref. Fig.14)



Fig.14

5. Press “Yes” to reboot your Windows system to complete. (Ref. to Fig.15)

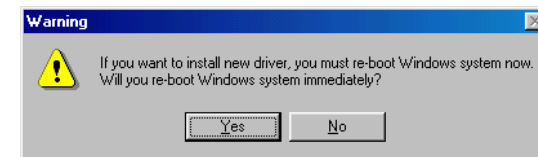


Fig.15

3.2.2 For Windows 2000/XP:

1. Run **Uninst.exe** from the driver folder in USB 2.0 Mobile Docking Station CD.
2. Please Press **OK** to remove the Printer Converter. (Ref. to Fig.16)



Fig.16

3. Printer Converter had been removed. Please press **Exit** to continue. (Ref. to Fig.17)

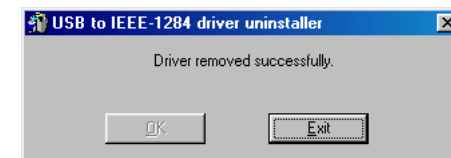


Fig.17

4. Run **Un20DOCK.exe** from the driver folder in USB 2.0 Mobile Docking Station CD.
5. Please Press "**OK**" to remove Serial Converter. (Ref. to Fig.18)



Fig.18

6. Press "Yes" to reboot your Windows system to complete procedure. (Ref. to Fig.19)

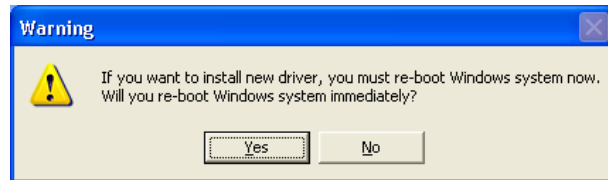
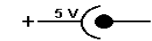


Fig.19

4. APPLICATION NOTE

1. USB 2.0 Mobile Docking Station normally derives its own power from PC Host. When only the Host power is supplied, the Power LED will turn RED, and the serial, parallel, keyboard, mouse, Ethernet and 3 downstream ports can operate without the external power adapter.
2. Please note that if the external power adaptor is not used and heavy power consumption USB device is connected, the 3 downstream ports may not function normally. Therefore the use of the external power adaptor is highly recommended. You may use the external power by connecting an external 5 voltage, 2A DC power that is UL, CE, T-mark or locally approved. For Polarity, see the following:



3. Unknown Device:

If the installation process is completed and some of the devices still don't work, please click on **Start, Settings, Control Panel**, double-click **System**, and **Device Manager**. Check "Human Interface Devices", "Keyboard", "Mouse", "Network adapters", "Ports", and "Universal serial bus controller" on the dialog box and see if "Unknown device" appears on the screen. You need to right-click the "**Unknown device**" and choose **Remove** to remove it. Then choose **Refresh** to re-detect the device. (You might need to install the device driver once again so please follow the same installation procedures as section 2.1). After trying the above procedures and your device still does not work, please contact technical support at your local distributor.

Limited Warranty

TRENDware warrants its products against defects in material and workmanship, under normal use and service, for the following lengths of time from the date of purchase.

TU2-ET200 – USB 2.0 MOBILE DOCKING STATION

1 year

If a product does not operate as warranted above during the applicable warranty period, TRENDware shall, at its option and expense, repair the defective product or part, deliver to customer an equivalent product or part to replace the defective item, or refund to customer the purchase price paid for the defective product. All products that are replaced will become the property of TRENDware. Replacement products may be new or reconditioned.

TRENDware shall not be responsible for any software, firmware, information, or memory data of customer contained in, stored on, or integrated with any products returned to TRENDware pursuant to any warranty.

There are no user serviceable parts inside the product. Do not remove or attempt to service the product by any unauthorized service center. This warranty is voided if (i) the product has been modified or repaired by any unauthorized service center, (ii) the product was subject to accident, abuse, or improper use (iii) the product was subject to conditions more severe than those specified in the manual.

Warranty service may be obtained by contacting TRENDware office within the applicable warranty period for a Return Material Authorization (RMA) number, accompanied by a copy of the dated proof of the purchase. Products returned to TRENDware must be pre-authorized by TRENDware with RMA number marked on the outside of the package, and sent prepaid, insured and packaged appropriately for safe shipment.

WARRANTIES EXCLUSIVE: IF THE TRENDWARE PRODUCT DOES NOT OPERATE AS WARRANTED ABOVE, THE CUSTOMER'S SOLE REMEDY SHALL BE, AT TRENDWARE'S OPTION, REPAIR OR REPLACEMENT. THE FOREGOING WARRANTIES AND REMEDIES ARE EXCLUSIVE AND ARE IN LIEU OF ALL OTHER WARRANTIES, EXPRESSED OR IMPLIED, EITHER IN FACT OR BY OPERATION OF LAW, STATUTORY OR OTHERWISE, INCLUDING WARRANTIES OF MERCHANTABILITY AND FITNESS FOR A PARTICULAR PURPOSE. TRENDWARE NEITHER ASSUMES NOR AUTHORIZES ANY OTHER PERSON TO ASSUME FOR IT ANY OTHER LIABILITY IN CONNECTION WITH THE SALE, INSTALLATION MAINTENANCE OR USE OF TRENDWARE'S

PRODUCTS.

TRENDWARE SHALL NOT BE LIABLE UNDER THIS WARRANTY IF ITS TESTING AND EXAMINATION DISCLOSE THAT THE ALLEGED DEFECT IN THE PRODUCT DOES NOT EXIST OR WAS CAUSED BY CUSTOMER'S OR ANY THIRD PERSON'S MISUSE, NEGLIGENCE, IMPROPER INSTALLATION OR TESTING, UNAUTHORIZED ATTEMPTS TO REPAIR OR MODIFY, OR ANY OTHER CAUSE BEYOND THE RANGE OF THE INTENDED USE, OR BY ACCIDENT, FIRE, LIGHTNING, OR OTHER HAZARD.

LIMITATION OF LIABILITY: TO THE FULL EXTENT ALLOWED BY LAW TRENDWARE ALSO EXCLUDES FOR ITSELF AND ITS SUPPLIERS ANY LIABILITY, WHETHER BASED IN CONTRACT OR TORT (INCLUDING NEGLIGENCE), FOR INCIDENTAL, CONSEQUENTIAL, INDIRECT, SPECIAL, OR PUNITIVE DAMAGES OF ANY KIND, OR FOR LOSS OF REVENUE OR PROFITS, LOSS OF BUSINESS, LOSS OF INFORMATION OR DATA, OR OTHER FINANCIAL LOSS ARISING OUT OF OR IN CONNECTION WITH THE SALE, INSTALLATION, MAINTENANCE, USE, PERFORMANCE, FAILURE, OR INTERRUPTION OF THE POSSIBILITY OF SUCH DAMAGES, AND LIMITS ITS LIABILITY TO REPAIR, REPLACEMENT, OR REFUND OF THE PURCHASE PRICE PAID, AT TRENDWARE'S OPTION. THIS DISCLAIMER OF LIABILITY FOR DAMAGES WILL NOT BE AFFECTED IF ANY REMEDY PROVIDED HEREIN SHALL FAIL OF ITS ESSENTIAL PURPOSE.

Governing Law: This Limited Warranty shall be governed by the laws of the state of California.

TRENDware International Inc.
3135 Kashiwa Street
Torrance, CA 90505
USA
Tel: (310) 891-1100
www.trendnet.com

Disclaimer

Information in this document is subject to change without notice. The manufacturer does not make any representations or warranties (implied or otherwise) regarding the accuracy and completeness of this document and shall in no event be liable for any loss of profit or any other commercial damage, including but not limited to, special, incidental, consequential, or other damages.

No part of this document may be reproduced or transmitted in any form by any means, electronic or mechanical, including photocopying, recording or information recording and retrieval systems without the express written permission of the manufacturer.

All brand names and product names used in this document are trademarks, or registered trademarks, of their respective holders.

FCC Statement

This device generates and uses radio frequencies and may cause interference to radio and television reception if not installed and used properly. This has been tested and found to comply with the limits of a Class B computing device in accordance with the specifications in Part 15 of the FCC Rules. These specifications are designed to provide reasonable protection against such interference in a residential installation. However, there is no guarantee that interference will not occur in a particular installation. If this device does cause harmful interference to radio or television reception, which can be determined by plugging the device in and out, the user can try to correct the interference by one or more of the following measures:

- Reorient or relocate the receiving antenna.
- Increase the separation between the device and receiver.
- Connect the computer into an outlet on a circuit different from that to which the receiver is connected.
- Consult the dealer or an experienced radio/TV technician for help.

Technical Support

You can find the most recent driver/firmware/software and user documentations on the **TRENDware website** <http://www.trendnet.com> .
TRENDware provides **free technical support** for all customers for the duration of the warranty period on this product.

TRENDware Technical Support

Tel: +1-310-891-1100

Fax: +1-310-8911111

E-mail: support@trendware.com

www.trendnet.com

**Monday ~ Friday, 7:30AM ~ 6:00PM Pacific Standard Time
(except holidays)**