

***Internet Camera
TV-IP200***

User's Guide

TABLE OF CONTENTS

| | |
|--|-----------|
| ABOUT THIS GUIDE | 5 |
| INTRODUCTION | 6 |
| SYSTEM REQUIREMENT | 7 |
| INTERNET CAMERA..... | 7 |
| Network:..... | 7 |
| Recommended PC or Notebook to Access the Internet Camera | 7 |
| FEATURES AND BENEFITS | 9 |
| SIMPLE TO USE..... | 9 |
| SUPPORT VARIETY OF PLATFORMS..... | 10 |
| WEB CONFIGURATION | 10 |
| REMOTE UTILITY..... | 10 |
| CONNECTION TO EXTERNAL DEVICES..... | 11 |
| BROAD RANGE OF APPLICATIONS..... | 11 |
| PHYSICAL DESCRIPTION | 13 |
| FRONT PANEL..... | 13 |
| Power LED | 14 |
| LAN LED | 14 |
| REAR PANEL..... | 15 |
| Network Cable Connector..... | 15 |
| DC Power Connector..... | 16 |
| Reset Button..... | 16 |
| I/O Connector..... | 16 |
| TOP PANEL | 17 |
| Screw Hole | 17 |
| BOTTOM PANEL..... | 17 |
| Screw Hole | 18 |

| | |
|---|-----------|
| UNPACKING THE INTERNET CAMERA | 19 |
| CONNECTING THE INTERNET CAMERA TO THE CAMERA STAND..... | 20 |
| HARDWARE INSTALLATION | 21 |
| 1 CONNECT AN ETHERNET CABLE | 21 |
| 2 ATTACH THE EXTERNAL POWER SUPPLY..... | 22 |
| SECURITY | 23 |
| SOFTWARE INSTALLATION..... | 24 |
| WEB CONFIGURATION..... | 24 |
| MAIN MENU IMAGE..... | 26 |
| SYSTEM ADMINISTRATION..... | 27 |
| SYSTEM ADMINISTRATION..... | 27 |
| System Administration - System..... | 27 |
| System Administration - Image..... | 34 |
| System Administration - Users..... | 36 |
| System Administration –DateTime | 38 |
| System Administration –Trigger..... | 39 |
| System Administration - Information..... | 43 |
| System Administration - Tools | 43 |
| VIEW IMAGE – ACTIVEX MODE..... | 45 |
| VIEW IMAGE – JAVA MODE..... | 47 |
| INTERNET CAMERA APPLICATION..... | 49 |
| APPLICATIONS | 50 |
| INTERNET CAMERA APPLICATION DIAGRAMS..... | 51 |
| Home Applications..... | 51 |
| SOHO Applications..... | 52 |
| Enterprise Applications..... | 53 |
| I/O Connector Application..... | 54 |
| AUTO-RUN INSTALLATION | 55 |
| IPVIEW APPLICATION INSTALLATION..... | 58 |
| INSTALLATION..... | 58 |

| | |
|---|------------|
| IPVIEW – GETTING STARTED..... | 65 |
| IPVIEW | 65 |
| HOW TO CHANGE PASSWORD..... | 66 |
| <i>Change Password.....</i> | 66 |
| HOW TO CHANGE IP ADDRESS | 68 |
| <i>Change IP Address</i> | 68 |
| HOW TO ADD A CAMERA..... | 70 |
| <i>Add Camera</i> | 70 |
| HOW TO DELETE A CAMERA..... | 74 |
| <i>Delete Camera.....</i> | 74 |
| HOW TO VIEW A CAMERA..... | 75 |
| <i>View Camera.....</i> | 75 |
| HOW TO SNAP SHOT A CAMERA..... | 76 |
| <i>Snap shot Camera</i> | 76 |
| HOW TO ADJUST THE PROPERTY SETTING..... | 77 |
| <i>Property Setting.....</i> | 77 |
| <i>Menu Bar.....</i> | 89 |
| <i>Menu Bar - File</i> | 90 |
| <i>Menu Bar – View.....</i> | 90 |
| <i>Columns.....</i> | 90 |
| <i>Viewing Format.....</i> | 91 |
| <i>List View</i> | 91 |
| <i>Menu Bar - Camera</i> | 92 |
| <i>Enable Function</i> | 93 |
| <i>Menu Bar - Tools.....</i> | 93 |
| <i>Menu Bar - Help.....</i> | 94 |
| IPVIEW ICON DESCRIPTION..... | 95 |
| CONTEXT SENSITIVE MENU..... | 97 |
| UNINSTALL IPVIEW APPLICATION | 99 |
| APPENDIX | 102 |
| A FREQUENTLY ASKED QUESTIONS..... | 102 |
| B PING YOUR IP ADDRESS | 105 |
| C TROUBLE SHOOTING..... | 106 |
| D I/O CONNECTOR..... | 110 |

| | |
|-------------------------------------|-----|
| E UPGRADE FIRMWARE..... | 112 |
| F TIME ZONE TABLE..... | 113 |
| G XPLUG CONTROL INSTALLATION..... | 115 |
| H ADJUST INTERNET CAMERA FOCUS..... | 119 |
| I SPECIFICATION | 122 |
| G GLOSSARY OF TERMS..... | 125 |

ABOUT THIS GUIDE

This manual describes Internet Camera, including a description of the features, as well as the installation procedures and web configuration. Included in the manual are the operating procedures for the IPView application.

INTRODUCTION

Thank you for the purchase of the Internet Camera connecting directly to an Ethernet or Fast Ethernet. It is different from the conventional PC Camera, the Internet Camera is a standalone system with built-in CPU and web-based solutions providing a low cost solution that can transmit high quality video images for monitoring. The Internet Camera can be managed remotely, accessed and controlled from any PC/Notebook over the Intranet or Internet via a web browser. The simple installation procedures and web-based interface offers easy integration to your network application environments coupled with many applications such as remote monitoring for a cost-effective solution.

SYSTEM REQUIREMENT

Internet Camera

Network:

Local Area Network:

10Base-T Ethernet or 100Base TX Fast Ethernet

Recommended PC or Notebook to Access the Internet Camera

Web Browser:

System requirement:

| | |
|----------------------|------------------------------|
| CPU: | Pentium II, 266 MHz or above |
| Memory Size: | 32 MB (64 MB recommended) |
| VGA card resolution: | 800x600 or above |

- ?? Internet Explorer 5.0 or above (ActiveX & JAVA Mode – Image View for Windows OS and JAVA Mode – Image View for other OS)
- ?? Netscape 6.0 or above (JAVA Mode – Image View)

IPView Application:

Support OS: Win 98, Win 98 SE, Win 2000, Win Me, Win XP

System requirement for IPView:

| | |
|----------------------|-------------------------------|
| CPU: | Pentium III, 450 MHz or above |
| Memory Size: | 128 MB (256 MB recommended) |
| VGA card resolution: | 800x600 or above |

FEATURES AND BENEFITS

This section describes the features and benefits of the Internet Camera

Simple To Use

The Internet Camera is a standalone system with built-in CPU requiring no special hardware or software such as PC frame grabber cards. The Internet Camera supports both ActiveX mode for Internet Explorer and Java mode for Internet Explorer and Netscape Navigator. Therefore, all that is required is a web browser software such as Internet Explorer 5.0 or above or Netscape 6.0 or above. Just plug and view the picture from your Internet Camera with a valid IP Address.

Support Variety of Platforms

Supporting TCP/IP networking, SMTP e-mail, HTTP and other Internet related protocols. The Internet Camera can be utilized in a mixed operating system environment such as Windows, Unix, and Mac. It can be integrated easily into other www/Intranet applications.

Web Configuration

Applying a standard web browser, administrator can configure and manage the Internet Camera directly from its own web page via the Intranet or Internet. Up to 64 users name and password are permitted with privilege setting controlled by the administrator.

Remote Utility

Powerful IPView application assigns administrator with a pre-defined user ID and password whom can modify the Internet Camera settings from the remote site via Intranet or Internet. When new firmware is available you can also upgrade remotely

over the network for added convenience. Users are also allowed to monitor the image, and take snapshots.

Connection to External Devices

Supporting auxiliary Input/Output Connector, you can connect the Internet Camera to a variety of external devices such as IR-sensors, switches and alarm relays. One can combine with programmable alarming facilities to develop a variety of security applications that are triggered on alarm-based events. The Internet Camera provides up to two in/out external devices for connectivity.

Broad Range of Applications

With today's high-speed Internet services, the Internet Camera can provide the ideal solution for live video images over the Intranet and Internet for remote monitoring. The Internet Camera allows remote access from a web browser for live image viewing and allows administrator to manage and control the Internet Camera anywhere and any time in the world. Apply the Internet Camera to monitor various objects and places such as homes, offices, banks, hospitals, child-care centers, amusement parks and other varieties of industrial and public monitoring. The Internet

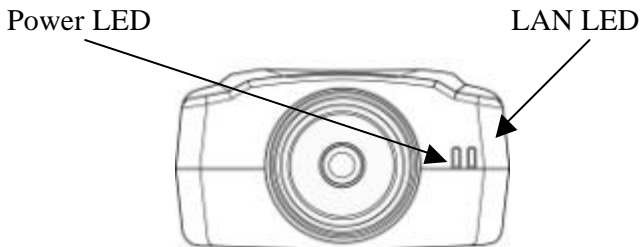
Camera can also be used for intruder detection, capture still images for archiving and many more applications.

4

PHYSICAL DESCRIPTION

This section describes the externally visible features of the Internet Camera.

Front Panel



Power LED

The Power LED is positioned on the right side of the Internet Camera's lens while facing the Internet Camera.

Steady blue confirms the Internet Camera is powered on.

Note:

There are three settings for the Power LED to control the light illumination for monitoring purpose from Normal / Off / Dummy. *Please refer to the Web Configuration section for detailed information and usage.*

LAN LED

The LAN LED is positioned on the far right side of the Internet Camera's lens while facing the Internet Camera. It is located right of the Power LED

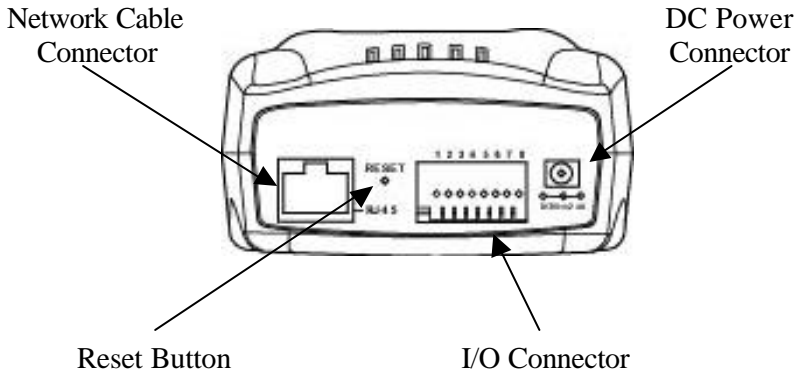
Steady orange confirms good connection to LAN connectivity.

Dependent on the data traffic the LED will begin to flash to indicate the Internet Camera is receiving/transceiving from/to the LAN or network.

Note:

There are three settings for the LAN LED to control the light illumination for monitoring purpose from Normal / Off / Dummy. *Please refer to the Web Configuration section for detailed information and usage.*

Rear Panel



Network Cable Connector

The Internet Camera's rear panel features an RJ-45 connector for connections to 10Base-T Ethernet cabling or 100Base-TX Fast Ethernet cabling (which should be Category 5 twisted-pair cable). The port supports the NWay protocol, allowing the Internet Camera to automatically detect or negotiate the transmission speed of the network.

DC Power Connector

The DC power input connector is located on the Internet Camera's rear panel and is labeled DC 5V with a single jack socket to supply power to the Internet Camera. Power will be generated when the power supply is connected to a wall outlet.

Reset Button

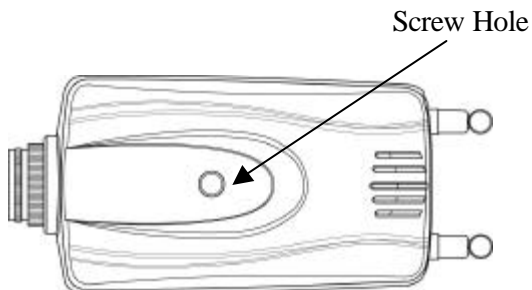
Reset will be initiated when the reset button is pressed once and Power LED begins to flash.

Factory Reset will be initiated when the reset button is pressed continuously for three seconds or when Power LED begins to light up. Release the reset button and the Power LED will begin to flash indicating the Internet Camera is changing to factory reset. When factory reset is completed the IP address will return to the default setting as 192.168.0.20.

I/O Connector

There are four I/O connectors, two for input and two for output situated on the rear panel. The I/O connectors provide the physical interface to send and receive digital signals to a variety of external alarm devices. *Please refer to the User's Guide appendix for detailed information.*

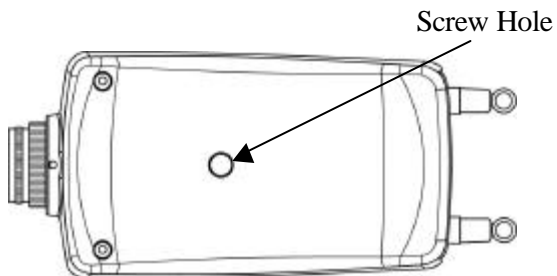
Top Panel



Screw Hole

Located on the top panel of the Internet Camera the screw hole is used to connect the camera stand onto the Internet Camera by attaching the screw head on the camera stand into the screw hole of the Internet Camera.

Bottom Panel



Screw Hole

Located on the bottom panel of the Internet Camera the screw hole is used to connect the camera stand onto the Internet Camera by attaching the screw head on the camera stand into the screw hole of the Internet Camera.

5

UNPACKING THE INTERNET CAMERA

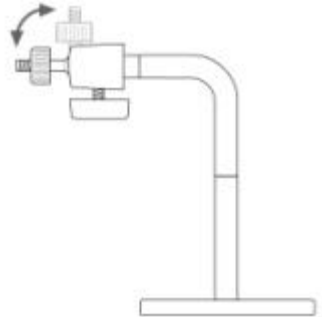
Carefully remove all items from the package. In addition to this User's Guide, be certain that you have:

- ?? One Internet Camera
- ?? One Installation CD-ROM
- ?? One Quick Installation Guide
- ?? One AC power adapter suitable for your country's electric power
- ?? One Camera Stand

If any item is missing, or if you find any damage or mismatch, promptly contact your dealer for assistance.

Connecting the Internet Camera to the Camera Stand

The Internet Camera comes with a camera stand (optional) with a swivel ball screw head that can be attached to the Internet Camera's bottom screw hole. Attach the camera stand to the Internet Camera and station it for your application. There are three holes located in the base of the camera stand allowing the Internet Camera to be mounted on the ceiling or any wall securely.



6

HARDWARE INSTALLATION

This section describes the Hardware installation procedure for the Internet Camera.

1 Connect an Ethernet cable

Connect an Ethernet cable to the network cable connector located on the Internet Camera's rear panel and attach it to the network.



2 Attach the external power supply

Attach the external power supply to the DC power input connector located on the Internet Camera's rear panel and is labeled DC 5V and connect it to your local power supply.

Note:

Confirm power source is supplied from the LED indicators label Power on the Internet Camera is illuminated.



SECURITY

To ensure the highest security and prevent unauthorized usage of the Internet Camera the Administrator has the exclusive privilege to access the System Administration for settings and control requirements to allow users the level of entry and authorize the privileges for all users. The Internet Camera supports multi-level password protection and access to the Internet Camera is strictly restricted to defined users whom has a "User Name" and "User Password" which is assigned by the Administrator.

Administrator can release a public user name and password so when remote users access the Internet Camera they will have the right to view the image transmitted by the Internet Camera.

Note:

When the Internet Camera is used for the first time it is highly recommended the Administrator sets the "Admin ID" and "Admin Password" to constrain users access to the Internet Camera since the Default settings are Null String. Once the ID and Password are defined only the Administrator has the access to management the Internet Camera. This procedure should be done as soon as possible since the security features with the Internet Camera will not be enabled until the "Admin ID" and "Admin Password" is defined.

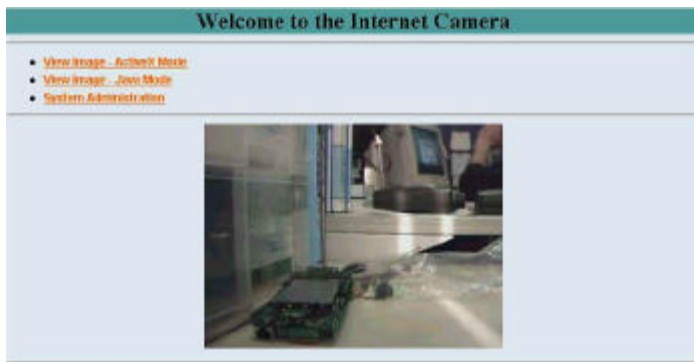
Note:

The PC's IP address must correspond with the Internet Camera's IP address in the same segment for the two devices to communicate.

Main Menu Image

After the default IP address is entered from the browser the Internet Camera's Welcome screen will appear with a still image. There will be three options to choose from to set-up and view your Internet Camera and they are as follows:


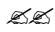

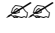
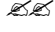
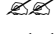
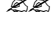
- ☞ View Image – ActiveX Mode
- ☞ View Image – Java Mode
- ☞ System Administration



System Administration

Click on “**System Administration**” from the Welcome screen to access the settings required for the Internet Camera.

There will be several options in the System menu bar to choose from to set your Internet Camera and they are as follows:

-  System
-  Image
-  Users
-  DateTime
-  Trigger
-  Information
-  Tools

System Administration

System Administration - System

The System menu contains commands for settings that are required for inputting key details to set-up the Internet Camera for operation.

Click on **"System"** in the system administration menu bar and the System screen will appear as illustrated below:

The screenshot shows a web-based system administration interface. At the top, there is a navigation bar with several menu items: "System", "Image", "Users", "DataTime", "Images", "Information", "Tools", and "Home". The "Home" menu item is circled in red, and an arrow points to it with the text "Click on 'Home' to return to Welcome Screen". Below the navigation bar, the "System" configuration page is displayed. It has a teal sidebar on the left and a light blue main content area. The form includes the following fields and options:

- Camera Name:** A text input field containing "CS-039150".
- Location:** An empty text input field.
- Admin:** Three text input fields for "Admin ID", "Admin Password", and "Confirm Password".
- IP Assignment:** Two sections. The first is "Manually Assign" with fields for "IP Address" (192.168.8.24), "Subnet Mask" (255.255.255.0), and "Default Gateway" (0.0.0.0). The second is "Assign Automatically Using" with radio buttons for "RARP", "BOOTP", "DHCP", and "PPPoE". Below these are fields for "Service Name", "User ID", and "Password".
- DNS IP Address:** Two text input fields, both containing "1111".
- LED Control:** Radio buttons for "Normal" (selected), "OFF", and "Dimmy".
- Locking Address:** An empty text input field.
- Open-Source Port:** Radio buttons for "Yes" (selected) and "No". Below are two text input fields: "1: Web Server - Default 80" (empty) and "2: Transfer Image - Default 8481" (empty).

At the bottom of the form are "Save" and "Cancel" buttons.

Camera Name:

This field is used for entering a descriptive name for the device.

The default setting for the Camera Name is CS-xxxxxx, where xxxxxx is the last six digit of the MAC Address. The maximum length is 32 (Printable ASCII).

Location:

This field is used for entering a descriptive name for the location used by the Internet Camera.

Admin:

This field is used for entering the Administrator ID along with the password to access the System Administration settings. Be sure to enter the password twice to confirm the details once in the Admin Password field and again in the Confirm Password field.

The default setting for Admin is blank space (Null String) you need to key in the Admin ID with a maximum length of 12 (Printable ASCII) characters and enter the Admin Password with a maximum length of 8 (Printable ASCII) characters.

It is highly recommended to set the Admin ID and Admin Password as soon as possible to enable security option for the Internet Camera to function.

IP Assignment:

Important Information

Access to the Internet Camera is done through assigning a proper IP address. Please make sure to use a vacant IP address when you assign the IP address for the Internet Camera. This will prevent errors from occurring if the IP address is overlapped.

There are two options to select from the IP Assignment either **Manually Assign** or **Assign Automatically Using**.

Manually Assign

You can click **“Manually Assign”** and directly enter the IP address.

The default settings are as follows:

?? Default IP – 192.168.0.20

?? Subnet Mask – 255.255.255.0

?? Default Gateway – 0.0.0.0

Assign Automatically Using

If your network is using RARP, BOOTP or DHCP server you can click **“Assign Automatically Using”** and click on **“RARP”**, **“BOOTP”** or **“DHCP”**. Under this setting the Internet Camera will automatically assign an IP address from RARP, BOOTP or DHCP server. Each time the Internet Camera starts up be sure the RARP, BOOTP or DHCP server is setup as assign a static IP to your Internet Camera.

If your application requires direct connection from an ADSL modem through the Internet Camera’s RJ-45 LAN port and you also have an ISP PPPoE account. Click on **“PPPoE”** option and enter the Service Name, User ID and Password into the respective fields.

The Internet Camera will get an IP address from the ISP each time the Internet Camera starts up.

DNS IP Address:

DNS (Domain Name System) server is an Internet service that translates domain names into IP addresses. Enter at least one DNS IP Address.

LED Control:

The LED control allows user to setup the LED illumination as desired. This feature provides the flexibility when surveillance activity is ON.

There are three options as follows:

~~⚡~~ Normal –

Power - Steady On of the LED indicator.

LAN - Steady On of the LED indicator. When LAN activity is present the LED indicator will flash steadily.

~~⚡~~ OFF –

Power - LED indicator is off

LAN – LED indicator is off

~~⚡~~ Dummy –

Power - Steady On of the LED indicator.

LAN - Steady On of the LED indicator with random flashing.

The default setting for the LED control is at Normal. When you have configured the LED control the correct illumination will set in after 1 minute.

Note:

This function is built-in to the LED indicators to add extra capabilities. The three options allow the Administrator to configure and camouflage the illumination for the LED indicator

to falsify the monitoring status. In Normal Mode the LED indicator functions as normally. Under Off Mode the LED indicators are both off however, it is still monitoring the activity. In Dummy Mode the LED indicators operate in monitoring condition but monitoring activity is off or on.

Loading ActiveX From:

This field is used to specify the location of Xplug Control (ActiveX) plug-in program. Enter the information as required in .ocx format, for example:

<http://www.<your company>.com/xplug.ocx> where <your company> must be replaced with your company's DNS server.

Open Second Port:

The Web Server field allows settings to open a second port for the Internet Camera. This will permit users IP Sharing Gateways to support multiple Internet Cameras. By default Port 80 is always opened for the Internet Camera Web Server access. Select “Yes” and input the second port value.

For example: If you have 5 Internet Cameras to be installed, each with an IP address from

192.168.0.101
192.168.0.102
192.168.0.103
192.168.0.104
192.168.0.105

You can open the second port for each Internet Camera from port 81 to Port 85 as illustrated below:

Internet Camera 1 – IP 192.168.0.101, second web port 81
Internet Camera 2 – IP 192.168.0.102, second web port 82
Internet Camera 3 – IP 192.168.0.103, second web port 83
Internet Camera 4 – IP 192.168.0.104, second web port 84
Internet Camera 5 – IP 192.168.0.105, second web port 85

You also need to setup your DSL gateway for Port Mapping.

Port 81 map to 192.168.0.101
Port 82 map to 192.168.0.102
Port 83 map to 192.168.0.103
Port 84 map to 192.168.0.104
Port 85 map to 192.168.0.105

The Transfer Image field allows settings to open a second port for the Internet Camera to transfer images. The default Port 8481 is open image transfer and you can define a second port similar to the above.

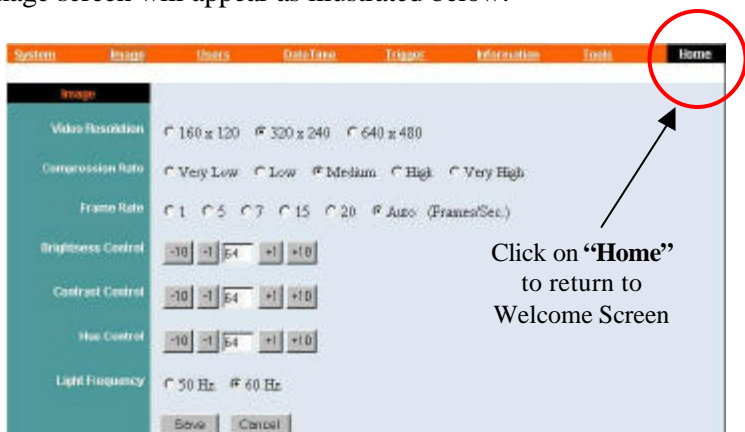
Save/Cancel:

After making sure all settings in the System are correct, click on the **“Save”** icon to store the settings for the Internet Camera. You can alternatively click on the **“Cancel”** icon to restore all settings to the values last saved to or retrieved from the Internet Camera.

System Administration - Image

Image menu in the system administration contains commands to provide the settings for the images captured by the Internet Camera.

Click on **“Image”** in the system administration menu bar and the Image screen will appear as illustrated below:



Video Resolution:

Select the desired video resolution format ranging from 160x112, 320x240 (default) or 640x480

Compression Rate:

Select the desired compression rate with five levels from very low to very high. Higher video compression rate will generate more compact file size with less video quality and vice-versa. The default setting is at Medium.

Frame Rate:

Select the frame rate desired with default setting at Auto for optimal frame rate.

Brightness Control:

Adjust the brightness level with default setting at 64.

Contrast Control:

Adjust the contrast level with default setting at 64.

Hue Control:

Adjust the hue level with default setting at 64.

Light Frequency:

Adjust the light frequency to suit your area of operation from the options either 50 Hz or 60 Hz (default).

Note:

50 Hz and 60 Hz variants are available to accommodate the different light frequency found in USA (60 Hz) and Europe (50 Hz) for the Internet Camera to ensure better image quality.

Save/Cancel:

After making sure all settings in the Image are correct, click on the **“Save”** icon to store the settings for the Internet Camera. You can alternatively click on the **“Cancel”** icon to restore all settings to the values last saved to or retrieved from the Internet Camera.

System Administration - Users

The User options menu contains commands to allow system administrator to assign legal users who are permitted to monitor the Internet Camera from the remote site.

Click on “Users” in the system administration menu bar and the Users screen will appear as illustrated below:



Click on “Home”
to return to
Welcome Screen

Add User:

User Name:

Enter the user name in this field.

A maximum of 64 users names are allowed, however each users name must be different. Each user name can be used as a group given the password for example, if the User Name is “Guest” and the User Password is “Guest” anyone can access the Internet Camera with these details used as a group of users under the User Name Guest. The maximum length for the User Name is 12 (Printable ASCII).

User Password:

Enter the user's password assigned by the administrator. The maximum password length is 8 (Printable ASCII).

I/O Output Control:

Administrator has the authority to give permission for the privilege to control the I/O Output Control to user's by selecting "Yes" or "No" to activate the I/O Output control.

To add a new users name input the necessary information first and click on the "Add" icon.

Delete User:

Select the user you wish to delete from the pull down menu and click on the "delete" icon.

Important Information

Once administrator has configured the Internet Camera Users , any user will be required to enter a login password to access the video image of the Internet Camera. The password dialog box is illustrated below.



System Administration – DateTime

The DateTime menu contains commands for setting the Internet Camera's time and date requirements to provide correct information to users who might be thousands of miles away in the remote site. There are two options to select from the DateTime menu bar either Synchronized with Time Server or Set Manually.

Click on **“DateTime”** in the system administration menu bar and the DateTime screen will appear as illustrated below:



Click on **“Home”** to return to Welcome Screen

DateTime:

Select **“Synchronized with Time Server”** and the time will be based on GMT setting. The time will be synchronized every 10 minutes. This is also the default setting for the Internet Camera.

IP Address:

Enter the IP Address of the Time Server in this field.

Protocol:

Two options of NTP or Time are available for your selection to link with the Time Server. The default setting is NTP.

TimeZone:

System administrator must select the time zone for the region.

Please refer to the appendix for the time zone selection table.

To set the Date Time manually select **“Set Manually”** and system administrator must enter the Date and Time in the respective field manually.

Note:

When you select Set Manually, each time the Internet Camera is powered off and on you must re-enter the details once again due to time lost.

Save/Cancel:

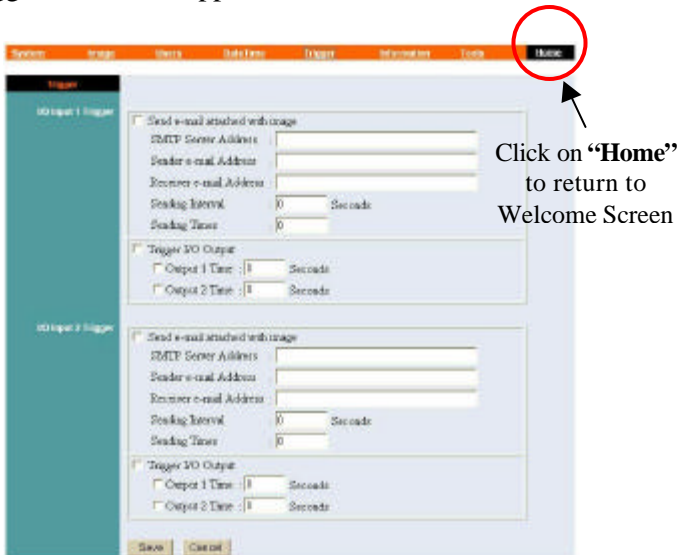
After making sure all settings in the DateTime are correct, click on the **“Save”** icon to store the settings for the Internet Camera. You can alternatively click on the **“Cancel”** icon to restore all settings to the values last saved to or retrieved from the Internet Camera.

System Administration – Trigger

The Trigger menu contains commands for the I/O Trigger connectors providing the physical interface for 2 digital output and 2 digital input that is used for connecting a diversity of

external alarm devices to the Internet Camera such as IR-Sensor and alarm relay.

Click on **“Trigger”** in the system administration menu bar and the Trigger screen will appear as illustrated below:



The default setting for the I/O Trigger functions are disabled you must enable the I/O Trigger first before the Triggers will perform.

There are two options to select from the Trigger screen **I/O Input 1 Trigger** and **I/O Input 2 Trigger**.

I/O Input 1 Trigger:

Select **“Send e-mail attached with image”** and enter the relevant information such as the SMTP Server Address, Sender e-mail

Address, Receiver e-mail Address, Sending Interval and Sending Times.

- ?? **SMTP** (Simple Mail Transfer Protocol) is a protocol for sending e-mail messages between servers you need to input the mail server address in this field.
- ?? **Sender e-mail** is the person's e-mail address whom will be sending the e-mail.
- ?? **Receiver e-mail** is the e-mail address of the person whom will receive the e-mail.
- ?? **Sending Interval** is the period of time between each e-mail being sent to the receiver. If the setting is at 10 seconds, a new e-mail will be sent in 10 seconds interval to the receiver.
- ?? **Sending Time** is the number of times the e-mail will be sent to the receiver before it terminates.

Select “**Trigger I/O Output**” and enter the setting for the duration of the output device for Output 1 time and Output 2 time in seconds.

I/O Input 2 Trigger:

Select “**Send e-mail attached with image**” and enter the relevant information such as the SMTP Server Address, Sender e-mail Address, Receiver e-mail Address, Sending Interval and Sending Times.

- ?? **SMTP** (Simple Mail Transfer Protocol) is a protocol for sending e-mail messages between servers you need to input the mail server address in this field.
- ?? **Sender e-mail** is the person's e-mail address whom will be sending the e-mail.

- ?? **Receiver e-mail** is the e-mail address of the person whom will receive the e-mail.
- ?? **Sending Interval** is the period of time between each e-mail being sent to the receiver. If the setting is at 10 seconds, a new e-mail will be sent in 10 seconds interval to the receiver.
- ?? **Sending Time** is the number of times the e-mail will be sent to the receiver before it terminates.

Select **“Trigger I/O Output”** and enter the setting for the duration of the output device for Output 1 time and Output 2 time in seconds.

Save/Cancel:

After making sure all settings in the System are correct, click on the **“Save”** icon to store the settings for the Internet Camera. You can alternatively click on the **“Cancel”** icon to restore all settings to the values last saved to or retrieved from the Internet Camera.

Warning

When connecting other devices through the I/O connectors, please make sure the maximum current of 100mA is strictly observed. Any failure to do so might cause a loss of power to the Internet Camera and possibly cause serious damage to the Internet Camera.

Please refer to the appendix for detailed information regarding the I/O Connector.

System Administration - Information

The Information menu contains commands for displaying information about the Internet Camera.

Click on **“Information”** in the system administration menu bar and the Information screen will appear as illustrated below:



The Information table provides detailed information of the Internet Camera such as the Model Name, Firmware Version, Mac Address, and IP Address.

System Administration - Tools

The Tools menu contains commands for restarting the Internet Camera.

Click on **“Tools”** in the system administration menu bar and the Tools screen will appear as illustrated below:



Click on **“Home”**
to return to
Welcome Screen

Reset:

The Reset command restarts the Internet Camera just like turning the device off and on and saved settings are retained. The Reset panel contains the message “Do you really want to reset this device?” and a YES button. If you do not want to reset the Internet Camera, exit the panel without clicking YES, otherwise, click on the **“YES”** icon and the reset process will initiate.

Factory Reset:

A factory reset restarts the Internet Camera and returns all of its settings to their default values. The Factory Reset panel contains the message “Do you really want to factory reset this device?” and a YES button. If you do not want to carry out a factory reset command, exit the panel without clicking YES, otherwise click on the **“YES”** icon and factory reset will be initiated.

Note:

The Network must be reconfigured after a Factory Reset.

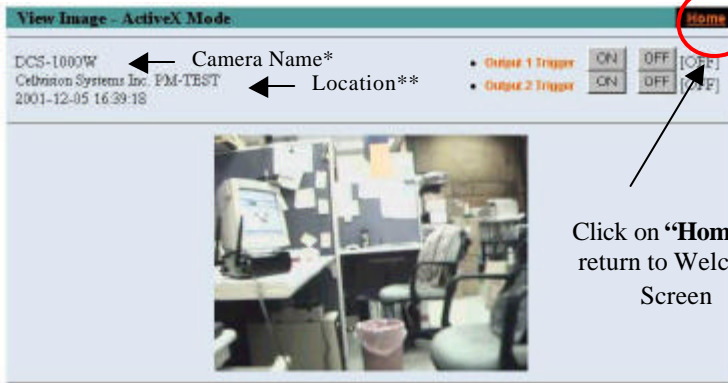
Once the configuration is completed click on **“Home”** to return to the Welcome screen and select the desired Viewing Image either

through ActiveX Mode or Java Mode as described in the next section.

Then position the Internet Camera to the desired location appropriately for your purpose. Followed by adjustment of the Internet Camera focus, done manually by turning the lens clockwise or anti-clockwise to the desired image quality. *Please refer to the appendix for detailed information regarding Adjust Internet Camera Focus and Replacing the Lens.*

View Image – ActiveX Mode

To view video images from the browser, click on “**View Image – ActiveX Mode**” from the welcome screen to access the video images from Internet Explorer as illustrated below:



Camera Name* - The Camera name will be display when the Camera Name field is entered in the Web Configuration setting under “**System**”

Location**- The location of the Internet Camera will be displayed when the Location field is entered in the Web Configuration settings under “**System**”.

Note:

Please refer to the appendix on how to install ActiveX.

1. *Install to the Web Server*
2. *Install to your Local PC*

In the View Image – ActiveX Mode you are allowed two output trigger options. Just click on the desired selection “**ON**” or “**OFF**” to utilize the options for each of the output triggers (Output 1 trigger or Output 2 trigger).

Note 1:

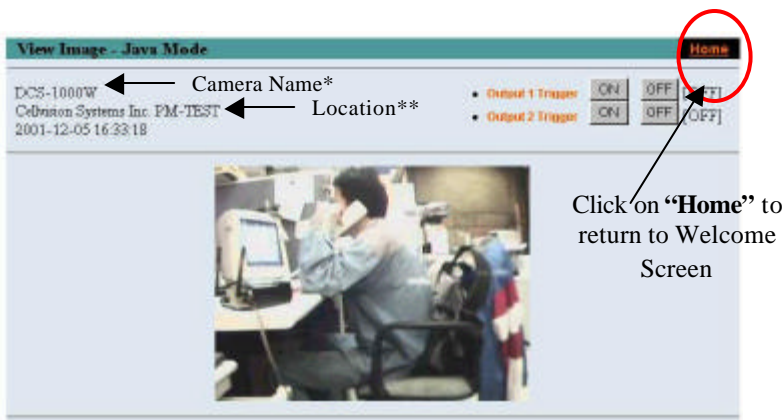
Output trigger will send a 5V signal to the device connected to the Internet Camera. A maximum of two devices is permitted to connect to the Internet Camera to utilize the output trigger function. *Please refer to appendix for detailed information.*

Note 2:

Administrator has the authority to allow user’s the permission to set the output trigger functions through the setting in the “Users” of System Administration menu bar.

View Image – Java Mode

Click on “**View Image – Java Mode**” from the Welcome screen to access the video images from the Internet Explorer or Netscape browser as illustrated below:



Camera Name* - The Camera name will be display when the Camera Name field is entered in the Web Configuration setting under “**System**”

Location** - The location of the Internet Camera will be displayed when the Location field is entered in the Web Configuration settings under “**System**”.

In the View Image – Java Mode you are allowed two output triggers. Just click on the desired selection “**ON**” or “**OFF**” to utilize the options for each of the output triggers (Output 1 trigger or Output 2 trigger).

Note 1:

Output trigger will send a 5V signal to the device connected to the Internet Camera. A maximum of two devices is permitted to connect to the Internet Camera to utilize the output trigger function. *Please refer to appendix for detailed information.*

Note 2:

Administrator has the authority to allow user's the permission to set the output trigger functions through the setting in the "Users" of System Administration menu bar.

INTERNET CAMERA APPLICATION

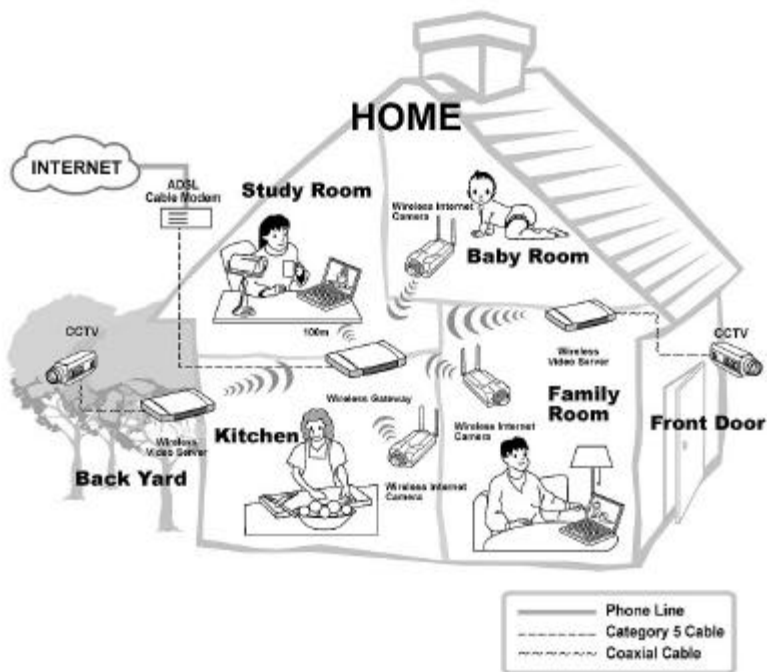
The Internet Camera can be applied in wide variety of applications. It is an all-in-one device attached directly to an Ethernet or Fast Ethernet network. It is a standalone system with built-in CPU along with web-based solutions transmitting high quality video images for monitoring purposes. It can be managed remotely, accessed and controlled from any PC desktop over the Intranet or Internet via a web browser. With the easy installation procedure real-time live images will be available once the Internet Camera is installed coupled with the IPView application you can further expand the scope of the Internet Camera.

The following section will provide typical applications for the Internet Camera along with the IPView applications and includes some basic knowledge to assist in the installation and configuration of the Internet Camera.

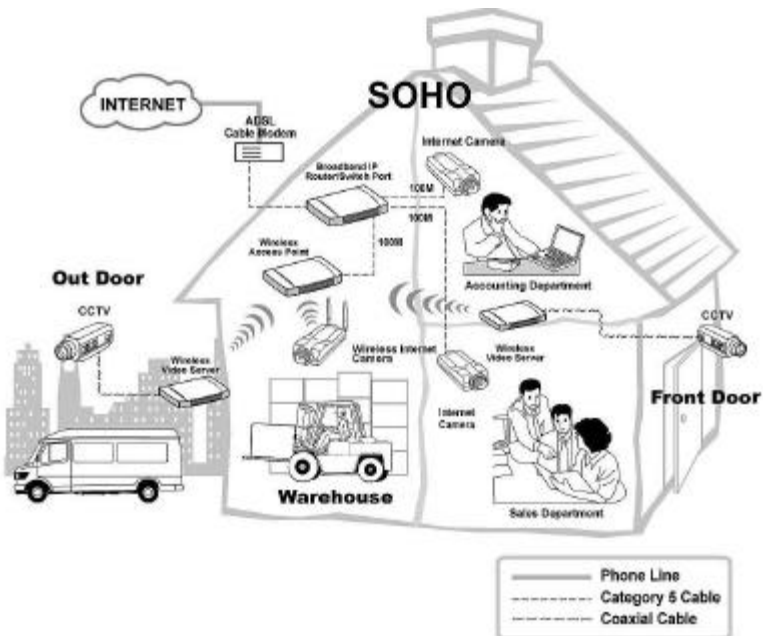
Applications

- ?? Monitoring of local and remote places and objects such as construction sites, hospitals, amusement parks, schools and day-care centers through the use of a web browser.
- ?? From the IPView application you can capture single frame images.
- ?? Connect up to two external devices to the Internet Camera for alarm notifications when a trigger is activated you can configure to send-mail messages with a single frame image.

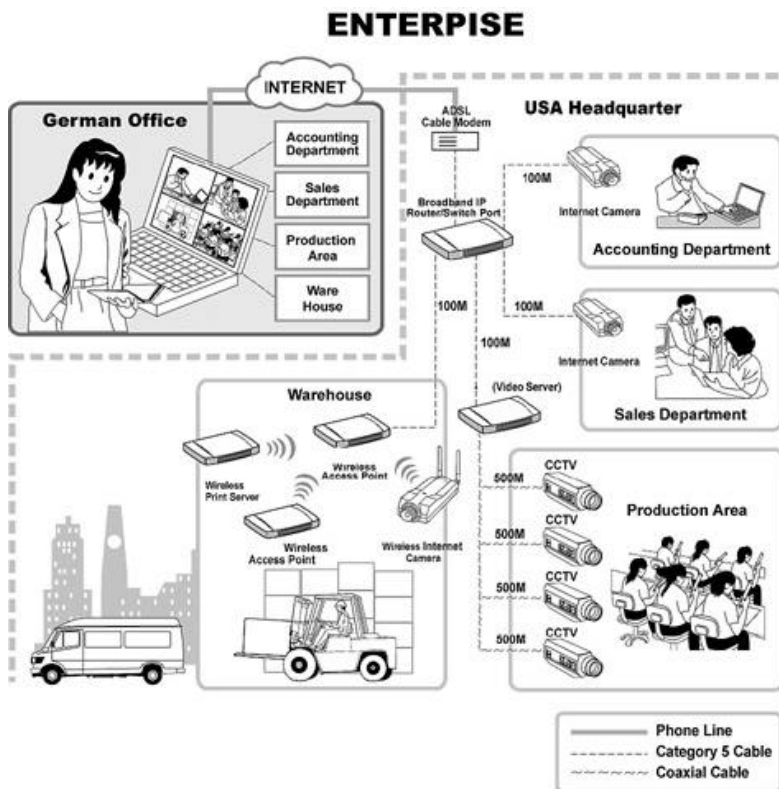
Internet Camera Application Diagrams



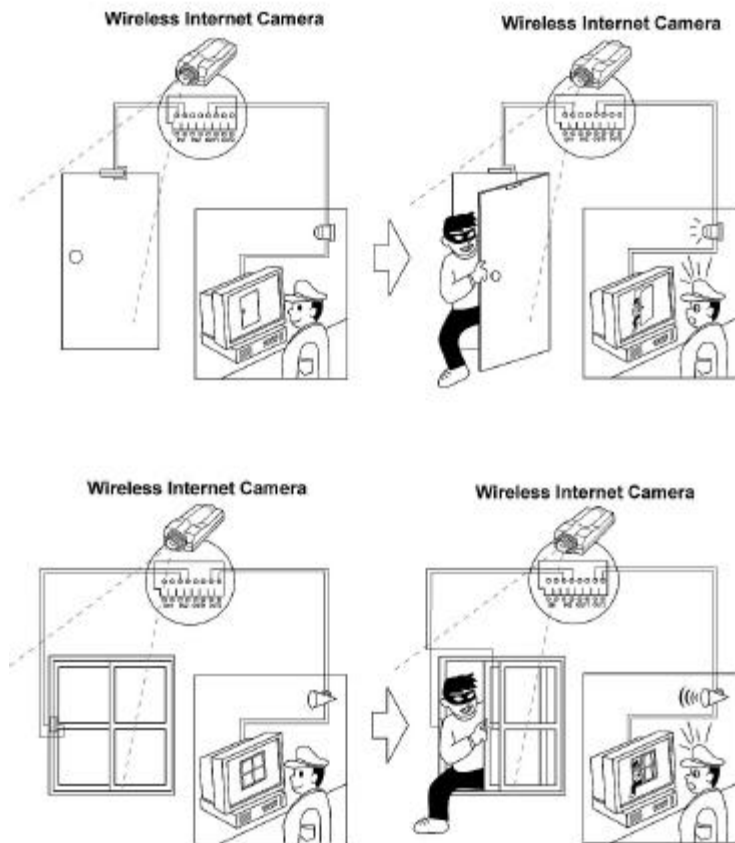
SOHO Applications



Enterprise Applications



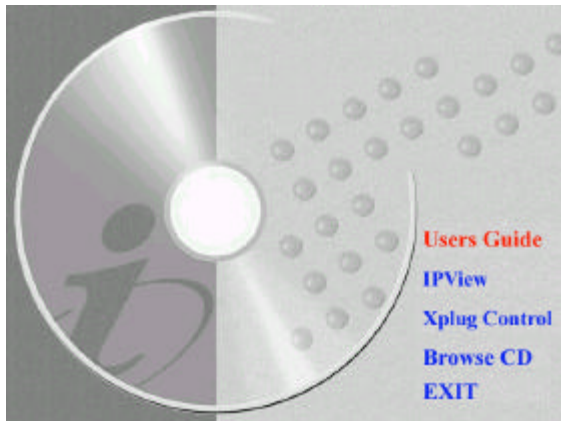
I/O Connector Application



9

AUTO-RUN INSTALLATION

Insert the CD-ROM into the CD-ROM drive to initiate the auto-run program once completed a menu screen will appear as follows:



Then select the desired options from the menu buttons and they are as follows:

- ?? User's Guide
- ?? IPView
- ?? Xplug Control
- ?? Adobe Acrobat
- ?? Browse CD
- ?? Exit

To preview the User's Guide in .pdf format for detailed information regarding the installation procedure for the Internet Camera simply click on the "**User's Guide**" button.

To install the IPView application click on the "**IPView**" button to activate the installation procedure for the application program. *Please refer to the next section for detailed information for installing IPView application.*

To install Xplug Control (ActiveX) plug-in program into your PC/Notebook click on the "**Xplug Control**" button to activate the installation procedure for the plug-in program. *Please refer to the appendix for detailed information regarding Installation of Xplug Control (ActiveX) into your PC/Notebook or Web Server.*

If you do not have Adobe Acrobat Reader installed in your PC/Notebook click on the "**Adobe Acrobat**" button to activate the installation procedure. This will allow you to preview the User's Guide for the Internet Camera.

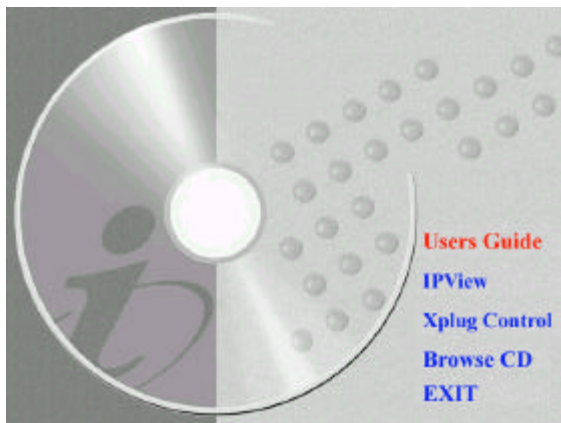
If you wish to glance the contents of the CD-ROM click on the "**Browse CD**" button and the content of the CD-ROM will be available for preview.

To exit the CD-ROM just double click on the "**EXIT**" button.

IPVIEW APPLICATION INSTALLATION

Installation

Insert the CD-ROM into the CD-ROM drive to initiate the auto-run program. Once completed a menu screen will appear as follows:

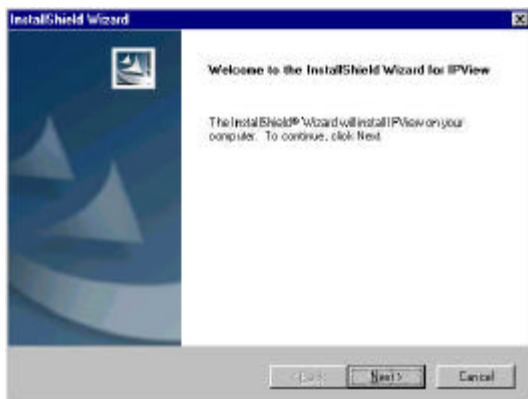


To install the IPView Application click on the **"IPView"** button to activate the installation procedure for the application program.

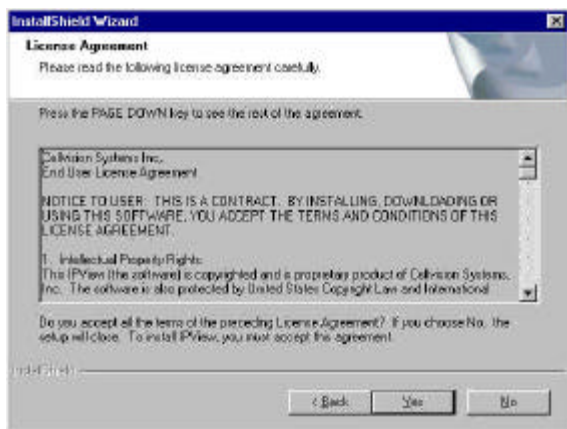
Once executed a prompt will appear requesting the input of the desired language selection. Make the desired selection and click on **"OK"** to continue.



The Welcome screen will appear. Click on the **"Next"** button to proceed with the installation.

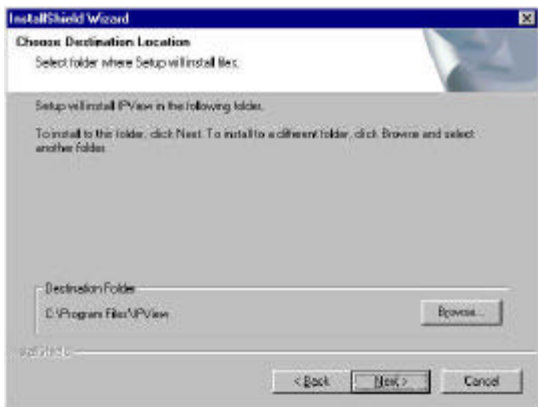


The License Agreement prompt will appear as below. Read the details carefully and click on the “**Yes**” icon to continue with the installation procedure.

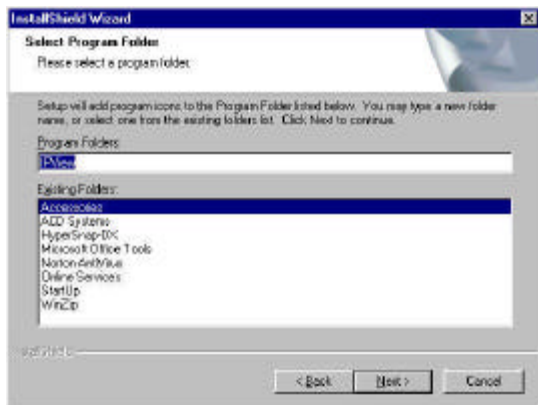


A prompt will appear and in the Destination Location dialog box, you may click on “**Next**” to accept the recommended destination location or click on “**Browse**” to select another location. After

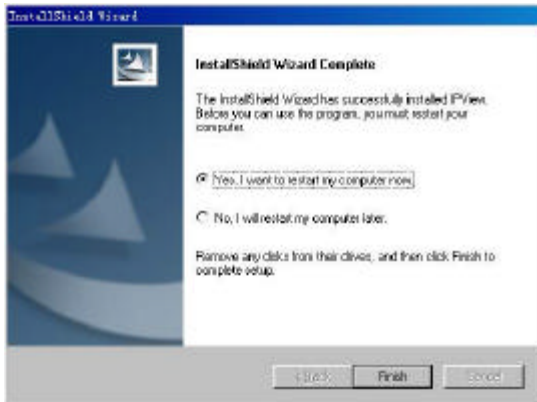
specifying the desired destination location, click on “**Next**” to proceed further.



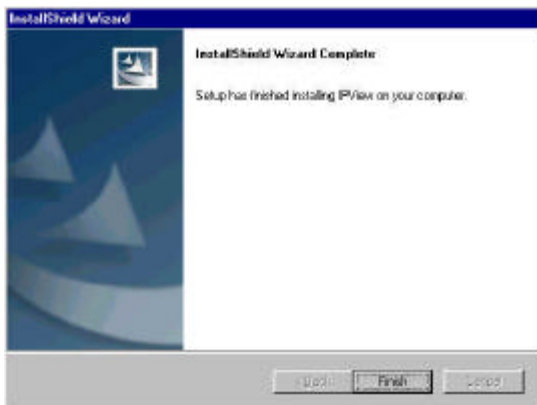
The Select Program Folder prompt will appear providing information of where the IPView application will be located, click on “**Next**” to continue. If you wish to modify your settings, click on “**Back**” to return to the previous screens.



Please wait until one of the two dialog box to appear, select either *“Yes, I want to restart my computer now”* and click on the **“Finish”** icon to restart the computer to complete the installation procedure.

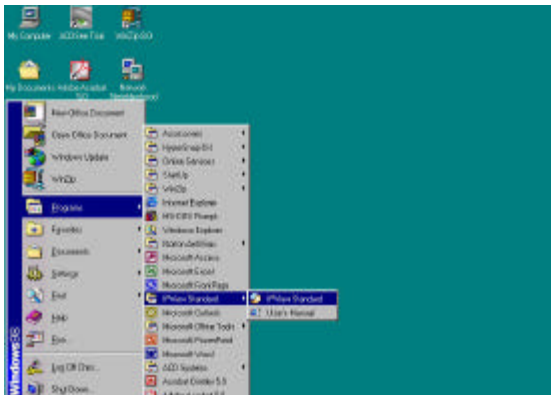


or click on the **“Finish”** icon to complete the installation procedure



After successfully installing the IPView, the application program for the Internet Camera is automatically installed to \Programs\Files Directory.

To start running the IPView click on windows **Start Menu/Programs/IPView/IPView**



Once IPView is executed a Login prompt will appear, you must enter the default User Name: **admin** into the respective field and click on “OK” to log into the application.



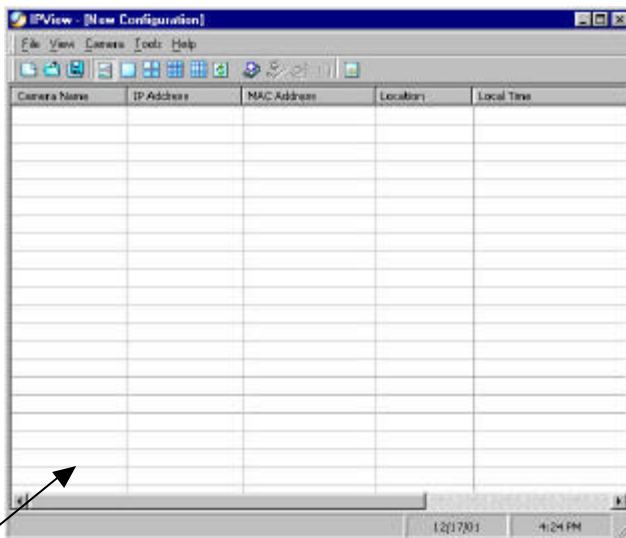
IPVIEW – GETTING STARTED

This section describes the operation of the IPView application User Interface with detailed procedures for using the application.

IPView

IPView is responsible for the management of preview, configuration, and searching of each camera.

It is designed with a user-friendly interface for ease of control and navigation requirements as illustrated below.



List view format

How to Change Password

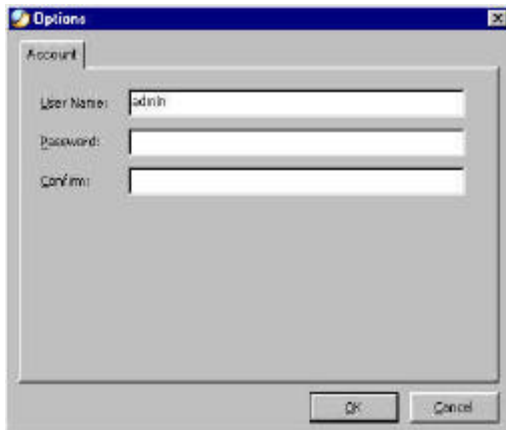
Change Password

When IPView is used for the first time it is highly recommended to change the **User Name** and **Password** by the Administrator to constrain users access to the IPView application. Once the **User Name** and **Password** are defined only the Administrator has access to the management of IPView applications. This procedure should be done as soon as possible to prevent unauthorized usage of IPView application.

Once IPView is executed a **Login** prompt will appear, you must enter the default **User Name** : **admin** into the respective field and click on **“OK”** to log into the application.



To change the **User Name** and **Password** select **“Tools”** > **“Options”**. The **Options** dialog box will appear as illustrated below.



The administrator needs to enter a **User Name**, **Password** and **Confirm** password into the respective fields. Once all the new details are entered click on the “**OK**” icon.

Make sure to save any changes you have made to keep the information updated.

Note:

Alternatively you can click the **Options** icon  as illustrated or use the hot key “**F10**”.

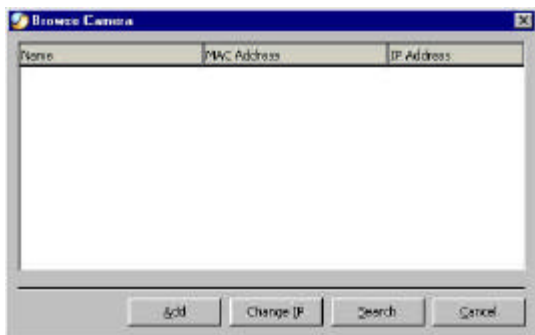
How to Change IP Address

Change IP Address

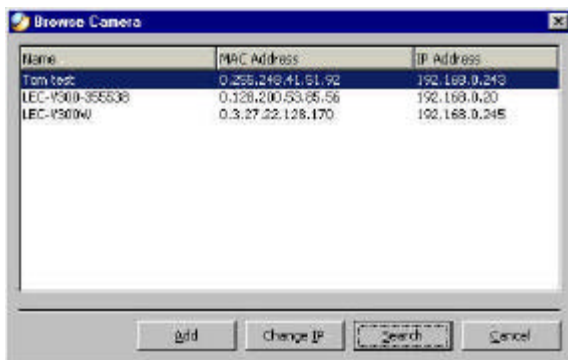
To change an IP Address for a camera select “**Camera**” > “**Add**”. An **Add Camera** dialog box will appear as illustrated below.



Click on the **“Browse”** icon, the **Browse Camera** dialog box will appear with a blank screen as illustrated below.



Click on the **“Search”** icon and IPView will detect and search all the available camera’s that are installed on the local area network as depicted below:



You must highlight the camera you wish to change the IP Address and click on the “**Change IP**” icon and the **Change IP Address** dialog box will appear as depicted below:



Enter the new **IP Address** along with the **Subnet Mask** and **Default gateway** into the respective fields and click on the “**OK**” icon and IPView will automatically change the IP Address.

Make sure to save any changes you have made to keep the information updated.

How to Add a Camera

Add Camera

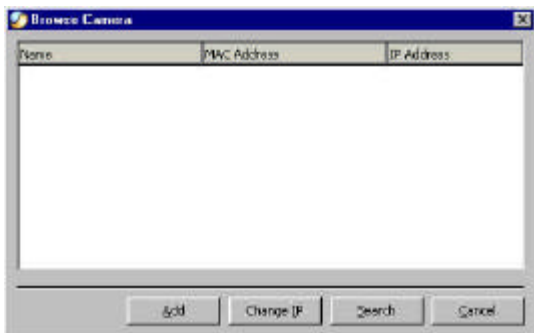
To add a new camera select “**Camera**” > “**Add**”. An **Add Camera** dialog box will appear as illustrated below.



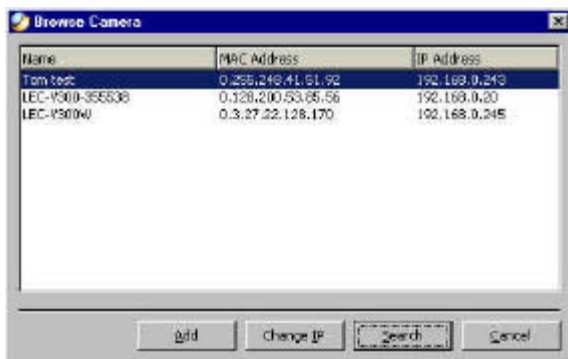
You can enter the IP Address of the camera in the specified field and click the **“Add”** icon to add a new camera. If the IP Address is entered incorrectly a dialog box will appear to notify the error.



If you are unsure of the IP Address of the camera you can click on the **“Browse”** icon, the **Browse Camera** dialog box will appear with a blank screen as illustrated below.

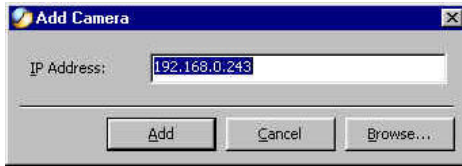


Click on the **“Search”** icon and IPView will detect and search all the available camera’s that are installed on the local area network as depicted below:



You must highlight the camera you wish to add and click on the **“Add”** icon. The **Add Camera** dialog box will appear once again with the IP Address entered. Click on the **“Add”** icon and the camera will be automatically added into IPView list view format.

Alternatively you can double click on the camera you wish to add and the **Add Camera** dialog box will appear once again with the IP Address entered. Click on the **“Add”** icon and the camera will be automatically added into IPView list view format.



If the **Login Camera** dialog box appears make sure to enter the correct **User Name** and **Password** and click on the “**OK**” icon and the camera will be added into IPView in list format. If the **User Name** and **Password** is entered incorrectly the camera will not be added into IPView.



The above dialog box will appear only if administrator has already set the **User Name** and **Password** during the Web Configuration setting.

If you forget to highlight the camera you wish to add a dialog box will appear to notify you of the error.




Make sure to save any changes you have made to keep the information updated.

Note 1:

You are only able to add one camera at a time.

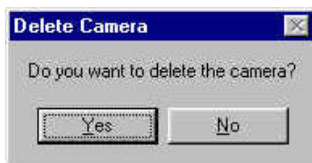
Note 2:

Alternatively you can click the **Add** icon  as illustrated or use the hot key “**Shift+Ins**”.

How to Delete a Camera

Delete Camera

To delete a camera you must highlight the camera you wish to delete from IPView list view format. From the menu bar select “**Camera**” > “**Delete**”. A **Delete Camera** dialog box will appear and click on the “**Yes**” icon to delete the camera or click on “**No**” if you do not wish to delete the camera as illustrated below.



Make sure to save any changes you have made to keep the information updated.

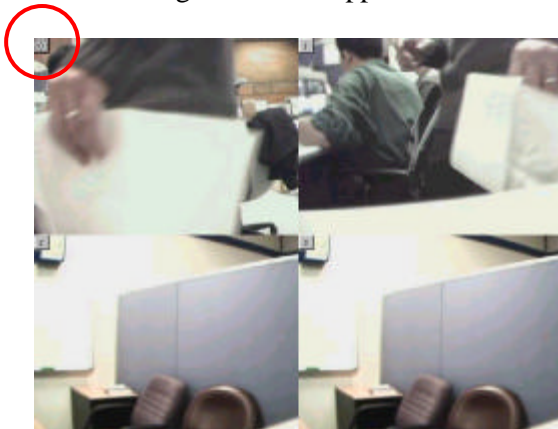
Note:

Alternatively you can click the **Delete** icon  as illustrated or use the hot key “**Del**”.

How to View a Camera

View Camera

From the menu bar select “**View**” > “**4 Cameras**” (other choices are available in **1 Camera**, **9 Cameras** and **16 Cameras** viewing format) and the viewing screen will appear with the video image.



Note:





The icon on the upper left corner of the screen will appear with the camera number that is being displayed

To return to the IPView list view format, click on the icon located on the upper left corner of the screen and a case sensitive menu will appear. Select “**List**” and the viewing image will return to the list view format.

Note 1:

A maximum of 16 cameras are available for viewing with the IPView application.

Note 2:

Alternatively you can click the **1 Camera** icon  as illustrated or use the hot key “**Ctrl+F3**”. For **4 Cameras** , **9 Cameras**  and **16 Cameras**  click the respective icon or use the hot key as follows “**Ctrl+F4**”, “**Ctrl+F5**” and “**Ctrl+F6**”. To return to list view format use the hot key “**Ctrl+F1**”.

How to Snap shot a Camera

Snap shot Camera

To snap shot a camera you must highlight the camera you wish to snap shot from the list view format. From the menu bar select “**Camera**” > “**Snap shot**”. A **Save Image** dialog box will appear for you to save the snap shot picture.

A second alternative is from the viewing mode either 1, 4, 9, 16 cameras click on the icon located on the upper left corner of the screen and a case sensitive menu will appear and select the “**Snap shot**” icon. A **Save Image** dialog box will appear for you to save the snap shot picture.

Note:

Alternatively you can click the **Snap shot** icon  as illustrated or use the hot key “**F5**”.

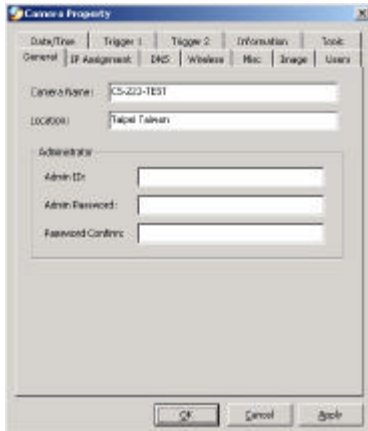
How to Adjust the Property Setting

Property Setting

“**Property**” is initiated by selecting “**Camera**” > “**Property**” and a dialog box will appear allowing settings of Web Configuration and upgrade firmware (Please refer to the appendix for detailed information). The **Camera Property** dialog box will appear for you to select the desired options from the tab selections to Configure the camera as shown below.

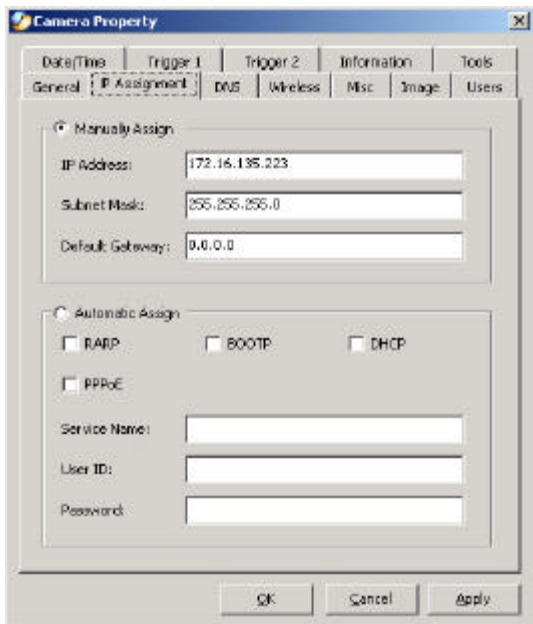
General

Allows settings for the camera name, location and administrator information such as administrator ID and password. Please refer to the Web Configuration section under “**System Administration – System**” for further details.



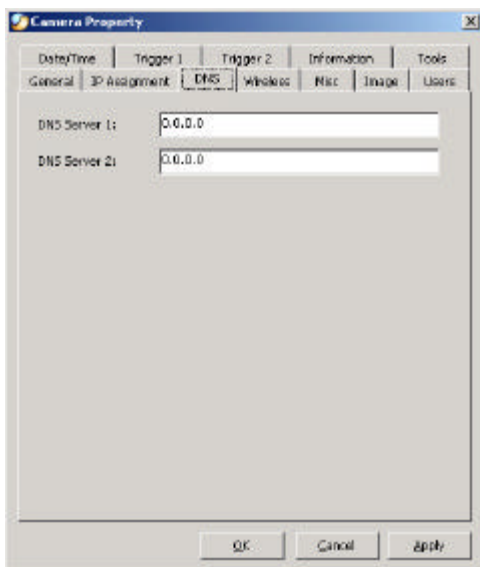
IP Assignment

There are two options to select from the IP Assignment either **Manually Assign** or **Assign Automatically Using**. Please refer to the Web Configuration section under **“System Administration – System”** for further details.



DNS

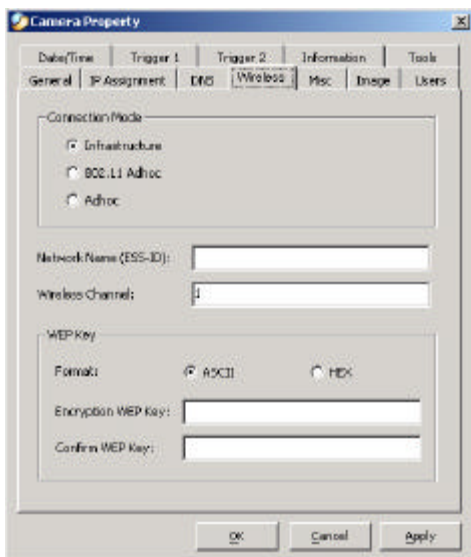
DNS (Domain Name System) server is an Internet service that translates domain names into IP addresses. Enter at least one DNS IP Address. Please refer to the Web Configuration section under **“System Administration – System”** for further details.



Wireless

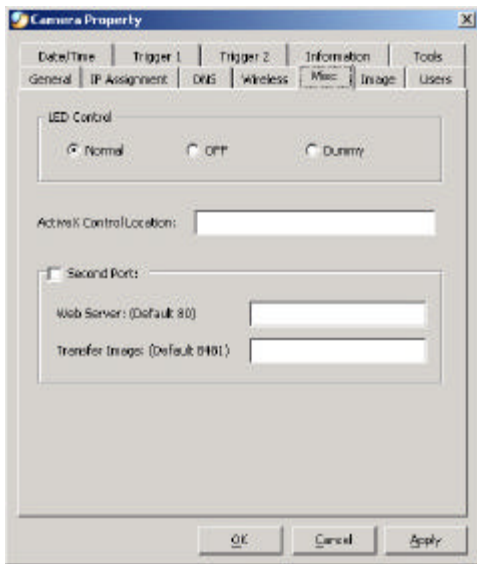
(Please skip this section if your camera is not wireless)

Allows setting for connection mode, network name, wireless channel, and WEP key. Please refer to the Web Configuration section under **“System Administration – System”** for further details.



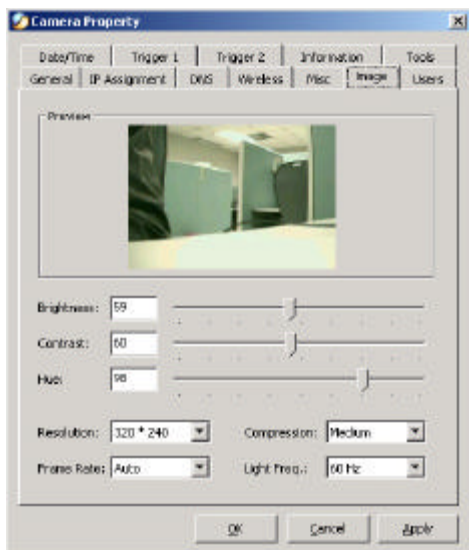
Misc

Allows setting for LED Control, ActiveX control location, and second port. Please refer to the Web Configuration section under **“System Administration – System”** for further details.



Image

Image provides the settings for the video image of the camera such as brightness, contrast, hue, resolution, compression, frame rate, and light freq. Please refer to the Web Configuration section under **“System Administration – Image”** for further details.



Users

Contain commands to allow system administrator to assign legal users who are permitted to monitor the camera from the remote site by **Add** or **Delete** user.



To add a user click on the **“Add”** icon and the **Add User** dialog box will appear. Enter the User Name and Password into the specific field. Select the I/O Output Control to give users the privilege of accessing the I/O Output Control.

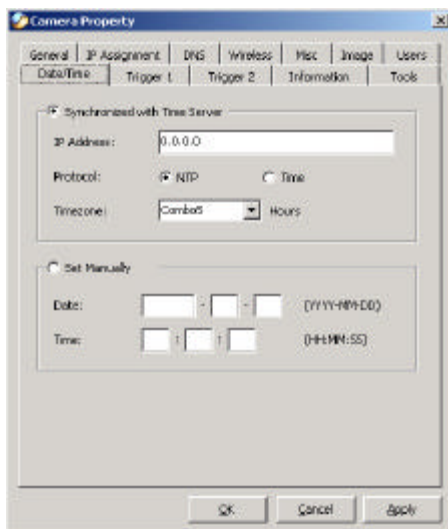


To delete a user, select the user and click on the **“Delete”** icon.

Please refer to the Web Configuration section under **“System Administration – Users”** for further details.

Date/Time

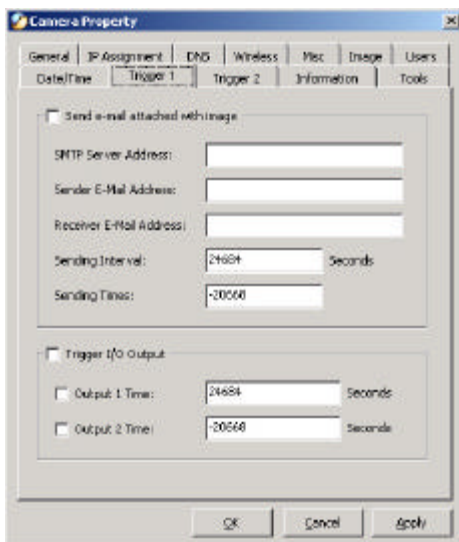
Contain commands for setting the camera’s time and date to provide correct time information to users who might be thousands of miles away in the remote site by selecting **Synchronized with Time Server** or **Set Manually**. Please refer to the Web Configuration section under **“System Administration – TimeDate”** for further details.



Trigger 1

Contains commands for setting the I/O Trigger connectors providing the physical interface for 1 digital output and 1 digital input that is used for connecting a diversity of external alarm devices to the camera such as IR-Sensor and alarm relay. Please

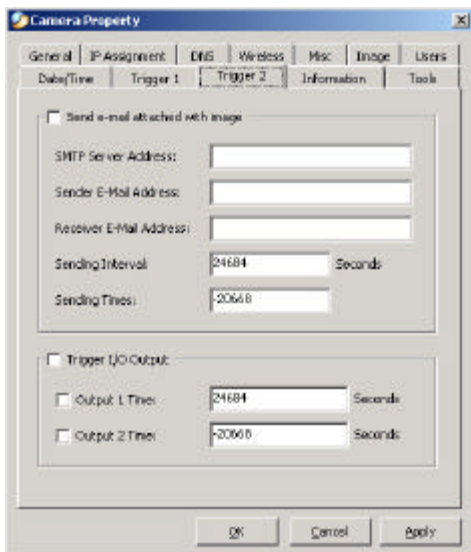
refer to the Web Configuration section under “**System Administration – Trigger**” for further details.



Trigger 2

Contains commands for setting the I/O Trigger connectors providing the physical interface for 1 digital output and 1 digital input that is used for connecting a diversity of external alarm devices to the camera such as IR-Sensor and alarm relay. Please

refer to the Web Configuration section under “**System Administration – Trigger**” for further details.



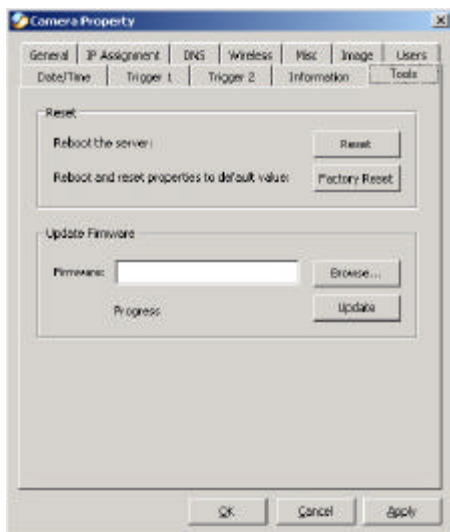
Information

Displays information about the camera such as the model, firmware version, MAC address, and IP address. Please refer to the Web Configuration section under “**System Administration – Information**” for further details.




Tools

Contains commands for reset the camera and update firmware (please refer to the appendix for detailed information). Please refer to the Web Configuration section under **“System Administration – Tools”** for further details on reset.



Make sure to save any changes you have made to keep the information updated.

Note:

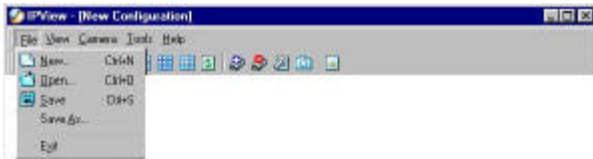
Alternatively you can click the **Property** icon  as illustrated or use the hot key “**F2**”.

Menu Bar

The menu bar provides easier access for users to navigate the IPView with different selections along with hot key capabilities as follows:

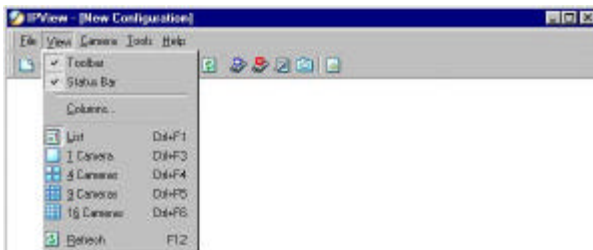
Menu Bar - File

“File” on the menu bar provides “New”, “Open”, “Save”, “Save As” and “Exit” for users to create new files, open existing files, save files, and exit the IPView as depicted below.



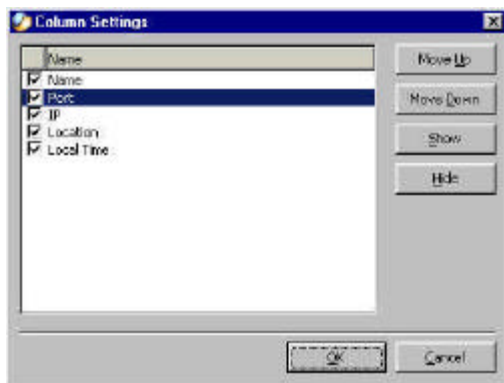
Menu Bar – View

“View” on the menu bar provide users with management capabilities for “Columns”, “List”, “Camera” and “Refresh”. You can view Camera in “1 Camera”, “4 Cameras”, “9 Cameras”, “16 Cameras”. The “View” menu bar is pictured below.



Columns

When “**Columns**” is launched a dialog box will appear allowing the option to choose the columns one would like to display in List View as illustrated below.



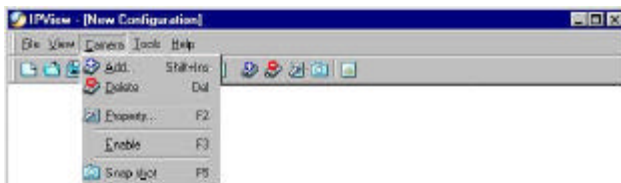
Viewing Format

You can view the format in “**List**” view. The “**List**” viewing format allows easy management and control of each camera.

List View

“**List**” view is illustrated below for your reference. You are able to list all the cameras and their properties such as the camera name, IP address, user name, and location will be displayed for ease of control and management.

function one can **“Delete”** a camera, manage the **“Property”**, **“Enable”** for real time and take a **“Snap shot”** image. The menu bar is illustrated below:

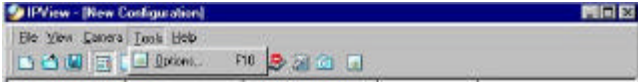


Enable Function

By default the video image is enabled. There will be a **“check”** next to the **Enable** command to show that the Enable function is working. To disable real-time image select **“Camera”** > **“Enable”** and real-time video image will stop and shutdown.

Menu Bar - Tools

“Tools” on the menu bar allows administrator management of the security settings such as User Name and Password to gain access into the IPView application. From the menu bar select **“Tools”** > **“Options”** and a dialog box will appear. Administrator can change the User Name and Password for security settings to access the application.



Menu Bar - Help

“**Help**” on the menu bar provides “**Contents**” and “**About**” to instruct users how to operate the camera in HTML format. From the menu bar select “**Help**” and can choose either “**Contents**” or “**About**” as depicted below:



IPView Icon Description



Open a new file. Alternatively the hot key is **Ctrl+N**.



Open an existing file. Alternatively the hot key is **Ctrl+O**.



Save a file. Alternatively the hot key is **Ctrl+S**.



List view format. Alternatively the hot key is **Ctrl+F1**.



1 Camera view format. Alternatively the hot key is **Ctrl+F3**.



4 Camera view format. Alternatively the hot key is **Ctrl+F4**.



9 Camera view format. Alternatively the hot key is **Ctrl+F5**.



16 Camera view format. Alternatively the hot key is **Ctrl+F6**.



Refresh IPView application. Alternatively the hot key is **F12**.



Add a camera. Alternatively the hot key is **Shift+Ins**.



Delete a camera. Alternatively the hot key is **Del**.



Property setting to configure the camera. Alternatively the hot key is **F2**.

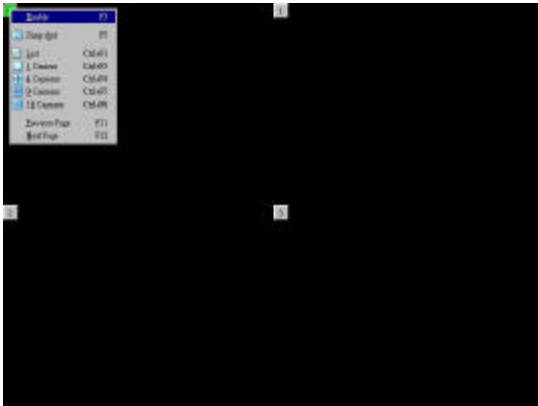


Snap shot to capture a single still image. Alternatively the hot key is **F5**.



Options to modify the User Name and Password for IPView. Alternatively the hot key is **F10**.

In view mode format click on the icon located on the upper left corner of the screen and a case sensitive menu will appear as illustrated below.



Features such as **“Enable”**, **“Snap shot”**, **“List”**, **“1 Camera”**, **“4 Cameras”**, **“9 Cameras”**, **“16 Cameras”**, **“Previous Page”** and **“Next Page”** will be available.

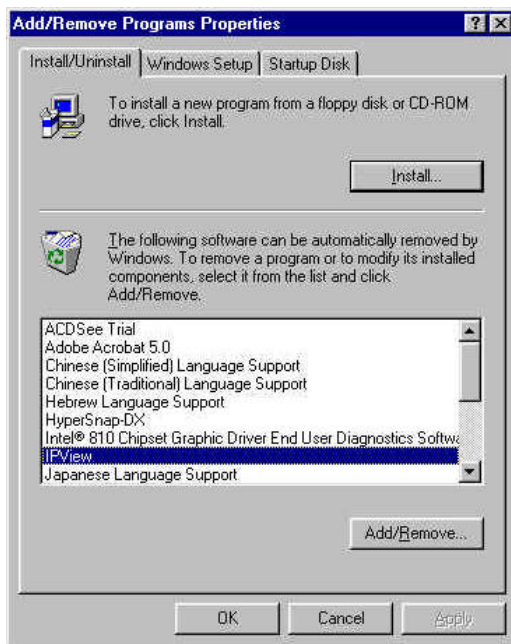
12

UNINSTALL IPVIEW APPLICATION

Click on windows **Start Menu / Settings / Control Panel**. A prompt screen will be displayed like the one below and double click on the **Add/Remove Programs** icon.

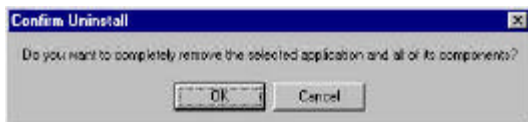


From the Add/Remove Programs Properties Menu, select “IPView” as illustrated below.

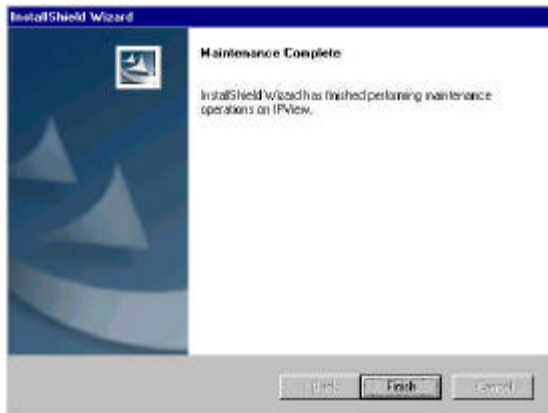


Then click on the “**Remove**” button. A new prompt screen will be displayed like the one below confirming the removal.

Click on the “**OK**” icon to continue the process or click on the “**Cancel**” icon to reject the uninstall process.



The InstallShield Wizard prompt will appear and click on **“Finish”** to complete the uninstallation procedure.



APPENDIX

A Frequently Asked Questions

Internet Camera Features

Q: What is a Internet Camera?

A: The Internet Camera is a standalone system connecting directly to an Ethernet or Fast Ethernet network. It is different from the conventional PC Camera, the Internet Camera is an all-in-one system with built-in CPU and web-based solutions providing a low cost solution that can transmit high quality video images for monitoring. The Internet Camera can be managed remotely, accessed and controlled from any PC/Notebook over the Intranet or Internet via a web browser.

Q: What is the maximum number of users that can be allowed to access the Internet Camera simultaneously?

A: Maximum number of users that can log onto the Internet Camera at the same time is 64. Please keep in mind the overall performance of the transmission speed will slow down when many users are logged on.

Q: What algorithm is used to compress the digital image?

A: The Internet Camera utilizes the JPEG image compression technology providing high quality images for users. JPEG is adopted since it is a standard for image compression and can be applied to various web browser and application software without the need to install extra software.

Internet Camera Installation

Q: Can the Internet Camera be used out-doors?

A: The Internet Camera is not weatherproof. It needs to be equipped with a weatherproof case to be used outdoors and it is not recommended.

Q: What network cabling is required for the Internet Camera?

A: The Internet Camera uses Category 5 UTP cable allowing 10 Base-T and 100 Base-T networking.

Q: Can the Internet Camera be setup as a PC-cam on the computer?

A: No, the Internet Camera is an Internet Camera used only on Ethernet and Fast Ethernet network.

Q: Can the Internet Camera be connected on the network if it consists of only private IP addresses?

A: The Internet Camera can be connected to LAN with private IP addresses.

Q: Can the Internet Camera be installed and work if a firewall exists on the network?

A: If a firewall exists on the network, port 80 is open for ordinary data communication. However, since the Internet Camera transmits image data, the default port 8481 is also required. Therefore, it is necessary to open port 8481 of the network for remote users to access the Internet Camera.

B PING Your IP Address

The PING (Packet Internet Groper) command can determine whether a specific IP address is accessible by sending a packet to the specific address and waiting for a reply. It can also provide a very useful tool to confirm if the IP address conflicts with the Internet Camera over the network.

Follow the step-by-step procedure below to utilize the PING command but first you must disconnect the Internet Camera from the network.

Start a DOS window.

Type ping x.x.x.x, where x.x.x.x is the IP address of the Internet Camera.

The succeeding replies as illustrated below will provide useful explanation to the cause of the problem with the Internet Camera IP address.

C Trouble Shooting

Q: I cannot access the Internet Camera from a web browser?

A1: The possible cause might be the IP Address for the Internet Camera is already being used by another device. To correct the possible problem, you need to first disconnect the Internet Camera from the network. Then run the PING utility (follow the instructions in Appendix B - PING Your IP Address).

A2: Another possible reason is the IP Address is located on a different subnet. To fix the problem, run the PING utility (follow the instructions in Appendix B - PING Your IP Address). If the utility returns “no response” or similar, the finding is probably correct, then you should proceed as follows:-

In Windows 95/98/2000 and Windows NT, double check the IP Address of the Internet Camera is within the same subnet as your workstation.

Click “Start”, “Setting”, “Control Panel”, and the “Network” icon.

Select TCP/IP from the “Network” dialog box and from the

“TCP/IP Properties” dialog box click on “Specify an IP address”.

If the Internet Camera is situated on a different subnet than your workstation, you will not be able to set the IP address from this workstation. To verify make sure the first 3 sections of the IP address of the Internet Camera corresponds to the first 3 sections of the workstation. Therefore the IP address of the Internet Camera must be set from a workstation on the same subnet.

A3: Other possible problems might be due to the network cable. Try replacing your network cable. Test the network interface of the product by connecting a local computer to the unit, utilizing a standard Crossover (hub to hub) Cable. If the problem is not solved the Internet Camera might be faulty.

Q: Why does the Power LED not light up constantly?

A: The power supply used might be at fault. Confirm that you are using the provided power supply DC 5V for the Internet Camera and verify that the power supply is well connected.

Q: Why does the LAN LED not light up properly?

A1: There might be a problem with the network cable. To confirm that the cables are working, PING the address of a know device on the network. If the cabling is OK and your network is reachable, you should receive a reply similar to the following (...bytes = 32 time = 2 ms).

A2: The network device utilized by the Internet Camera is not functioning properly such as hubs or switches. Confirm the power for the devices are well connected and functioning.

Q: Why does the Internet Camera work locally but not externally?

A1: Might be caused from the firewall protection. Need to check the Internet firewall with your system administrator.

A2: The default router setting might be a possible reason. Need to double check if the configuration of the default router settings is required.

Q: Why does a series of broad vertical white line appears through out the image?

A: A likely issue is that the CMOS sensor becomes overloaded when the light source is too bright such as direct exposure to sunlight or halogen light. You need to reposition the Internet Camera into a more shaded area immediately as this will damage the CMOS sensor.

Q: There is bad focus on the Internet Camera, what should be done?

A1: The focus might not be correctly adjusted for the line of sight. You need to adjust the Internet Camera focus manually as described in Adjust Internet Camera Focus.

A2: There is no adaptor fitted with your C-type lens. If you have previously changed the supplied CS-type lens, you may have unintentionally installed a C-type lens without fitting the adaptor first.

Q: Noisy images occur how can I solve the problem?

A1: The video images might be noisy if the Internet Camera is used in a very low light environment. To solve this issue you need more lighting.

Q: There is poor image quality, how can I improve the image?

A1: A probable cause might be the incorrect display properties configuration for your desktop. You need to open the Display Properties on your desktop and configure your display to show at least 65'000 colors for example at least 16-bit.

Note:

Applying only 16 or 256 colors on your computer will produce dithering artifacts in the image.

A2: The configuration on the Internet Camera image display is incorrect. Through the Web Configuration Image section you need to adjust the image related parameter for improve images such as brightness, contrast, hue and light frequency. Please refer to the Web Configuration section for detail information.

Q: There are no images available through the web browser?

A: The ActiveX might be disabled. If you are viewing the images from Internet Explorer make sure ActiveX has been enabled in the Internet Options menu. Alternatively, you can use the Java Applet for viewing the required images.

D I/O Connector

I/O Connector Definition for the Internet Camera

An 8-pole connector is provided for auxiliary IO connections to the Internet Camera.

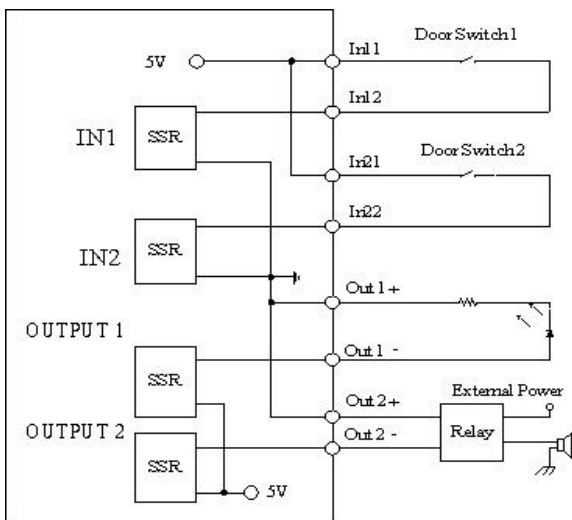
The IO connector provides the physical interface for 2 digital output and 2 digital input that is used for connecting a diversity of external alarm devices to the Internet Camera such as IR-Sensor and alarm relay.

The digital input is used for connecting external alarm devices and once triggered images will be taken and e-mailed.

The supported transistor output can give a maximum of DC 5V to the externally connected alarm devices and once triggered the current will activate the devices.

| | |
|--------------------|---|
| In 11 In 12 | In 11 & In 12 is a pair for digital input. It works at voltage 5V |
| In 21 In 22 | In 21 & In 22 is a pair for digital input. It works at voltage 5V |
| Out 1 + Out 1 - | Out 1 - & Out 1 + is a pair for digital out. The out put voltage is 5 V and maximum current is 100 mA |
| Out 2 + Out 2 - | Out 2 - & Out 2 + is a pair for digital out. The out put voltage is 5 V and maximum current is 100 mA |

I/O Schematic Diagram



Warning

1. When connecting a device to the Input connector, the device must be a passive component without voltage and electrical current.
2. When connecting other devices through the Output connector, please make sure the maximum current of DC 5V, 100mA is strictly observed.
3. Any failure of the above two points might cause serious damage to the camera.

Through the Web Configuration in the Trigger section, you must first enable the trigger function. Please refer to the Web Configuration section for detailed information.

E Upgrade Firmware

User's can update firmware from the IPView application. Select **“Camera” > “Properties”** and the **Camera Property** dialog box will appear. Select the **Tools** tab and enter the full path of the firmware binary file name in the Update Firmware field or you can click on the **“Browse”** icon to select the file. Once the firmware file is entered click on the **“Update”** icon to proceed with the updating process. Once completed click on the **“OK”** icon as illustrated below



Warning

During firmware update process please make sure no interruptions will occur as it might possibly cause serious damage to the Internet Camera

F Time Zone Table

(GMT-12:00) Eniwetok, Kwajalein

(GMT-11:00) Midway Island, Samoa

(GMT-10:00) Hawaii

(GMT-09:00) Alaska

(GMT-08:00) Pacific Time (US & Canada); Tijuana

(GMT-07:00) Arizona

(GMT-07:00) Mountain Time (US & Canada)

(GMT-06:00) Central Time (US & Canada)

(GMT-06:00) Mexico City, Tegucigalpa

(GMT-06:00) Saskatchewan

(GMT-05:00) Bogota, Lima, Quito

(GMT-05:00) Eastern Time (US & Canada)

(GMT-05:00) Indiana (East)

(GMT-04:00) Atlantic Time (Canada)

(GMT-04:00) Caracas, La Paz

(GMT-04:00) Santiago

(GMT-03:30) Newfoundland

(GMT-03:00) Brasilia

(GMT-03:00) Buenos Aires, Georgetown

(GMT-02:00) Mid-Atlantic

(GMT-01:00) Azores, Cape Verde Is.

(GMT) Casablanca, Monrovia

(GMT) Greenwich Mean Time : Dublin, Edinburgh, Lisbon, London

(GMT+01:00) Amsterdam, Berlin, Bern, Rome, Stockholm, Vienna

(GMT+01:00) Belgrade, Bratislava, Budapest, Ljubljana, Prague

(GMT+01:00) Brussels, Copenhagen, Madrid, Paris, Vilnius

(GMT+01:00) Sarajevo, Skopje, Sofia, Warsaw, Zagreb

(GMT+02:00) Athens, Istanbul, Minsk

(GMT+02:00) Bucharest

(GMT+02:00) Cairo

(GMT+02:00) Harare, Pretoria
 (GMT+02:00) Helsinki, Riga, Tallinn
 (GMT+02:00) Jerusalem
 (GMT+03:00) Baghdad, Kuwait, Riyadh
 (GMT+03:00) Moscow, St. Petersburg, Volgograd
 (GMT+03:00) Nairobi
 (GMT+03:30) Tehran
 (GMT+04:00) Abu Dhabi, Muscat
 (GMT+04:00) Baku, Tbilisi
 (GMT+04:30) Kabul
 (GMT+05:00) Ekaterinburg
 (GMT+05:00) Islamabad, Karachi, Tashkent
 (GMT+05:30) Bombay, Calcutta, Madras, New Delhi
 (GMT+06:00) Astana, Almaty, Dhaka
 (GMT+06:00) Colombo

 (GMT+07:00) Bangkok, Hanoi, Jakarta
 (GMT+08:00) Beijing, Chongqing, Hong Kong, Urumqi
 (GMT+08:00) Perth
 (GMT+08:00) Singapore
 (GMT+08:00) Taipei
 (GMT+09:00) Osaka, Sapporo, Tokyo
 (GMT+09:00) Seoul
 (GMT+09:00) Yakutsk
 (GMT+09:30) Adelaide
 (GMT+09:30) Darwin
 (GMT+10:00) Brisbane
 (GMT+10:00) Canberra, Melbourne, Sydney
 (GMT+10:00) Guam, Port Moresby
 (GMT+10:00) Hobart
 (GMT+10:00) Vladivostok

 (GMT+08:00) Singapore
 (GMT+08:00) Taipei
 (GMT+09:00) Osaka, Sapporo, Tokyo
 (GMT+09:00) Seoul
 (GMT+09:00) Yakutsk
 (GMT+09:30) Adelaide
 (GMT+09:30) Darwin
 (GMT+10:00) Brisbane
 (GMT+10:00) Canberra, Melbourne, Sydney
 (GMT+10:00) Guam, Port Moresby
 (GMT+10:00) Hobart
 (GMT+10:00) Vladivostok
 (GMT+11:00) **Maqadan, Solomon Is., New Caledonia**
 (GMT+12:00) Auckland, Wellington
 (GMT+12:00) Fiji, Kamchatka, Marshall Is.

G Xplug Control Installation

Installation To Web Server

Important Information

It is highly recommended to install the Xplug Control application to the Web Server for IE 5.0. It must be installed to a Public Domain with Fixed IP address.

1. Installation:

Copy the “xplug.ocx” file to any WEB Server table.

2. Setting (Configuration):

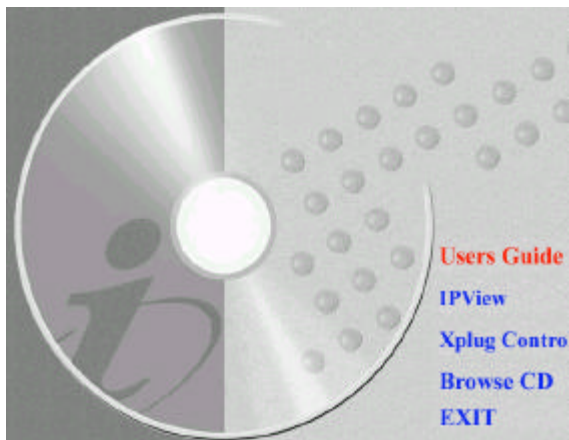
From the Web Configuration menu select “System” and under the “Loading ActiveX From” input web server location

(<http://www.web server location.com/>).

Once the settings are completed the user now is able to access the Internet Camera from the web browser by selecting the image view – ActiveX mode.

Installation To Local PC

Insert the CD-ROM into the CD-ROM drive to initiated the auto-run program once completed a menu screen will appear as follows:

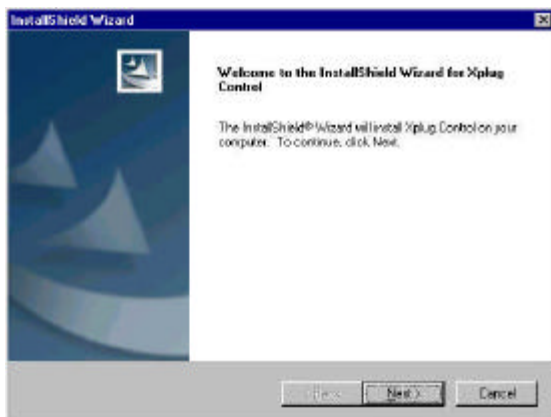


To install Xplug Control click on the "**Xplug Control**" button to activate the installation procedure for the plug-in program.

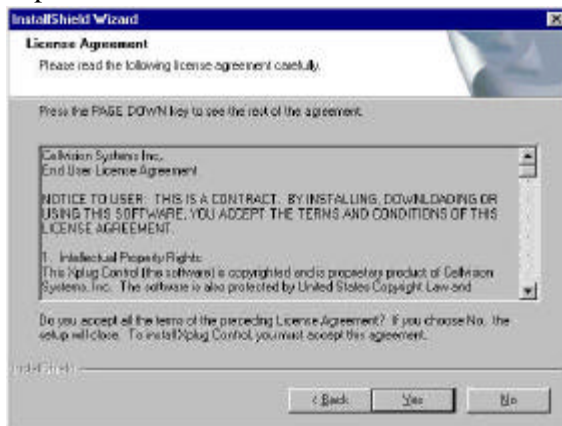
Once executed a prompt will appear requesting the input of the desired language selection. Make the desired selection and click on **“OK”** to continue.



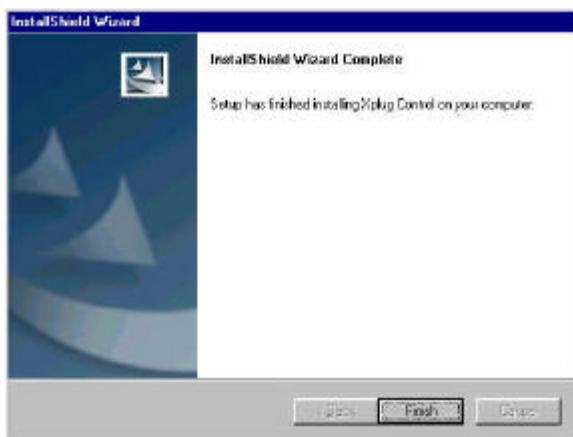
The Welcome screen will appear. Click on the **“Next”** button to proceed with the installation.



The License Agreement prompt will appear as below. Read the details carefully and click on the “Yes” icon to continue with the installation procedure.



Click on the “Finish” button to complete Setup of the Xplug Control Utility program for the Internet Camera.

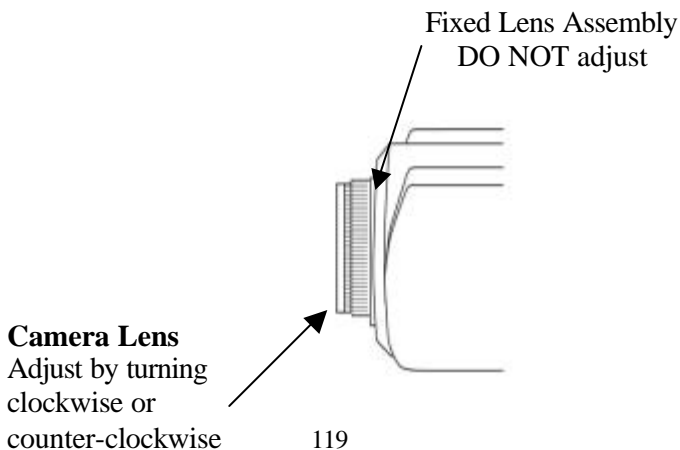


H Adjust Internet Camera Focus

The Internet Camera features an exchangeable CS-type lens that can be used for different applications as necessary. It supports rotational focus control so the lens can be adjusted to focus under normal and stable conditions to maximize the image quality of the Internet Camera.

To adjust the focus of the lens you need to turn the lens slowly in either clockwise or anti-clockwise direction until the desired image appears. **DO NOT** over turn the lens in either of the directions as it will be out of focus. Unless you want to substitute the lens **DO NOT** unscrew more than 1.0mm apart from the Fixed Lens Assembly.

Keep in mind while adjusting the Internet Camera's focus you can review the image quality from the Web browser.



Note:

You can further adjust the Internet Camera's image quality through the Web Configuration under **System Administration - Image**. Please refer to Web Configuration section for further details.

Warning

Direct exposure to sunlight may cause permanent damage to the CMOS sensor. Therefore do not expose the Internet Camera's lens directly to sunlight. When operation is required in glaring light environment, it is recommended to use an iris lens.

The Internet Camera is designed for indoor usage and if your application requires prolong exposure to sunlight, a sun visor is recommended to protect the Internet Camera.

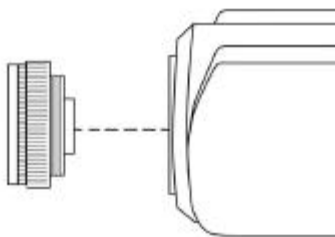
Replacing the Lens

Since the Internet Camera is designed with a CS- mount, the lens equipped with the Internet Camera can be replaced with any standard C or CS lens commonly used within the surveillance industry.

Follow the instructions below to replace the supplied lens with any C or CS type lens.

1. Unscrew the Internet Camera lens

2. C-lens only, attach the new lens to a CS-C adapter
3. Screw the new lens onto the Internet Camera. If appropriate, adjust the iris according to the prevailing light conditions.
4. Refer to *Adjusting the Internet Camera Focus* on the previous page.
5. Refresh the web browser and monitor the results from the Internet Camera.



I Specification

Video Specification

| | |
|-----------------------|---------------------------------|
| Resolution: | 640 x 480 pixel |
| Sensor: | 1/3" color CMOS sensor |
| Gain control: | Automatic |
| Exposure: | Automatic |
| White Balance: | Automatic |
| Shutter: | Electronics 1/60 ~ 1/15000 sec |
| Minimum Illumination: | 2.5lux@F1.4, 3000K color |
| Focal Length: | 6.0 mm |
| Aperture: | f=1.8 |
| Focus Extent: | 20 cm - 8 |
| Lens mounting: | Fixed board lens, CS-mount type |

Image (Video Setting)

| | |
|-----------------------------|--|
| Image compression: | JPEG |
| Frame rate: | 30fps@QCIF, 20fps@CIF, 3fps@VGA |
| Compression Rate selection: | 5 level (Very Low, Low, Medium, High, Very High) |
| Frame rate setting: | 1, 5, 7, 15, 20, auto (depends on the video format) |
| Video resolution: | 160x120, 320x240, 640x480 |
| Brightness control: | Range 1- 128 |
| Contrast control: | Range 1- 128 |
| Hue control: | Range 1- 128 |

System Hardware

LAN Connector: One RJ-45 port to connect to
10/100Mbps Ethernet, auto-sensed

Generic I/O Port: Four I/O ports, two for input and two for
output

Total 8-pin:

| | |
|-------|------------------|
| Pin 1 | Input Port (1) |
| Pin 2 | Input Port (1) |
| Pin 3 | Input Port (2) |
| Pin 4 | Input Port (2) |
| Pin 5 | Output Port (1+) |
| Pin 6 | Output Port (1-) |
| Pin 7 | Output Port (2+) |
| Pin 8 | Output Port (2-) |

Note:

The output voltage is DC 5V and maximum current is 100mA.

LED Indicator: Power LED (Blue)
LAN Activity LED (Orange)

Note:

LED three mode setting can be changed by software. (Normal /
Off / Dummy)

Power Supply: DC 5V/2.4A, switching type

Power Communication: 4.5 Watt (900mA x 5V)

Communication Support

Communication: 10/100Mbps Ethernet only

Communication protocol: HTTP, FTP, TCP/IP, UDP, ARP,
ICMP, BOOTP, RARP, DHCP, PPPoE

Browser Support

System requirement:

- | | |
|----------------------|------------------------------|
| CPU: | Pentium II, 266 MHz or above |
| Memory Size: | 32 MB (64 MB recommended) |
| VGA card resolution: | 800x600 or above |
- ?? Internet Explorer 5.0 or above (ActiveX & JAVA Mode – View Image for Windows OS and JAVA Mode – View Image for other OS)
 - ?? Netscape 6.0 or above (JAVA Mode – View Image)

IPView Application

Support OS: Win 98, Win 98 SE, Win 2000, Win Me, Win XP

System requirement for IPView:

- | | |
|----------------------|-------------------------------|
| CPU: | Pentium III, 450 MHz or above |
| Memory Size: | 128 MB (256 MB recommended) |
| VGA card resolution: | 800x600 or above |

Operating environment

- | | |
|------------------------|-------------------------|
| Operating temperature: | 5°C ~ 50°C |
| Storage temperature: | -25°C ~ 50°C |
| Humidity: | 5% ~ 95% non-condensing |

EMI

FCC, CE, VCCI

G Glossary of Terms

NUMBERS

- 10BASE-T** 10BASE-T is Ethernet over UTP Category III, IV, or V unshielded twisted-pair media.
- 100BASE-TX** The two-pair twisted-media implementation of 100BASE-T is called 100BASE-TX.

A

- Applet** Applets are small Java programs that can be embedded in an HTML page. The rule at the moment is that an applet can only make an Internet connection to the computer from which the applet was sent.
- ASCII** American Standard Code For Information Interchange, it is the standard method for encoding characters as 8-bit sequences of binary numbers, allowing a maximum of 256 characters.
- ARP** Address Resolution Protocol. ARP is a protocol that resides at the TCP/IP Internet layer which delivers data on the same network by translating an IP address to a physical address.
- AVI** Audio Video Interleave, it is a Windows platform audio and video file type, a common format for small movies and videos.

B

BOOTP Bootstrap Protocol is an Internet protocol that can automatically configure a network device in a diskless workstation to give its own IP address.

C

Communication Communication has four components: sender, receiver, message, and medium. In networks, devices and application tasks and processes communicate messages to each other over media. They represent the sender and receivers. The data they send is the message. The cabling or transmission method they use is the medium.

Connection In networking, two devices establish a connection to communicate with each other.

D

DHCP Dynamic Host Configuration Protocol was developed by Microsoft a protocol for assigning dynamic IP addresses to devices on a network. With dynamic addressing, a device can have a different IP address every time it connects to the network. In some systems, the device's IP address can even change while it is still connected. DHCP also supports a mix of static and dynamic IP addresses. This simplifies the task for network administrators because the software keeps track of IP addresses rather than requiring an administrator to manage the task. This means a new computer can be added to a network without the hassle of manually assigning it a unique IP address. DHCP allows the specification for the service provided by a router, gateway, or

other network device that automatically assigns an IP address to any device that requests one

DNS

Domain Name System is an Internet service that translates domain names into IP addresses. Since domain names are alphabetic, they're easier to remember. The Internet however, is really based on IP addresses every time you use a domain name the DNS will translate the name into the corresponding IP address. For example, the domain name *www.network_camera.com* might translate to *192.167.222.8*.

E

Enterprise network

An enterprise network consists of collections of networks connected to each other over a geographically dispersed area. The enterprise network serves the needs of a widely distributed company and operates the company's mission-critical applications.

Ethernet

The most popular LAN communication technology. There are a variety of types of Ethernet, including 10 Mbps (traditional Ethernet), 100 Mbps (Fast Ethernet), and 1,000 Mbps (Gigabit Ethernet). Most Ethernet networks use Category 5 cabling to carry information, in the form of electrical signals, between devices. Ethernet is an implementation of CSMA/CD that operates in a bus or star topology.

F

Fast Ethernet

Fast Ethernet, also called 100BASE-T, operates at 10 or 100Mbps per second over UTP, STP, or fiber-optic media.

Firewall

Firewall is considered the first line of defense in protecting private information. For better security, data can be encrypted. A system

designed to prevent unauthorized access to or from a private network. Firewalls are frequently used to prevent unauthorized Internet users from accessing private networks connected to the Internet, especially Intranets all messages entering or leaving the intranet pass through the firewall, which examines each message and blocks those that do not meet the specified security criteria.

G

- Gateway** A gateway links computers that use different data formats together.
- Group** Groups consist of several user machines that have similar characteristics such as being in the same department.

H

- HEX** Short for hexadecimal refers to the base-16 number system, which consists of 16 unique symbols: the numbers 0 to 9 and the letters A to F. For example, the decimal number 15 is represented as F in the hexadecimal numbering system. The hexadecimal system is useful because it can represent every byte (8 bits) as two consecutive hexadecimal digits. It is easier for humans to read hexadecimal numbers than binary numbers.

I

- Intranet** This is a private network, inside an organization or company, that uses the same software you will find on the public Internet. The only difference is that an Intranet is used for internal usage only.
- Internet** The Internet is a globally linked system of computers that are logically connected based on the Internet Protocol (IP). The Internet provides different ways to access private and public

information worldwide.

**Internet
address**

To participate in Internet communications and on Internet Protocol-based networks, a node must have an Internet address that identifies it to the other nodes. All Internet addresses are IP addresses

IP

Internet Protocol is the standard that describes the layout of the basic unit of information on the Internet (the *packet*) and also details the numerical addressing format used to route the information. Your Internet service provider controls the IP address of any device it connects to the Internet. The IP addresses in your network must conform to IP addressing rules. In smaller LANs, most people will allow the DHCP function of a router or gateway to assign the IP addresses on internal networks.

IP address

IP address is a 32-binary digit number that identifies each sender or receiver of information which is sent in packets across the Internet. For example 80.80.80.69 is an IP address, it is the closest thing the Internet has to telephone numbers. When you “call” that number, using any connection methods, you get connected to the computer that “owns” that IP address.

ISP

Internet Service Provider, is a company that maintains a network that is linked to the Internet by way of a dedicated communication line. An ISP offers the use of its dedicated communication lines to companies or individuals who can’t afford the high monthly cost for a direct connection.

J

JAVA

Java is a programming language that is specially designed for writing programs that can be safely downloaded to your computer through the Internet without the fear of viruses. It is an object-oriented multi-thread programming best for creating applets and

applications for the Internet, Intranet and other complex, distributed network.

L

LAN Local Area Network a computer network that spans a relatively small area sharing common resources. Most LANs are confined to a single building or group of buildings.

N

NAT Network Address Translator generally applied by a router, that makes many different IP addresses on an internal network appear to the Internet as a single address. For routing messages properly within your network, each device requires a unique IP address. But the addresses may not be valid outside your network. NAT solves the problem. When devices within your network request information from the Internet, the requests are forwarded to the Internet under the router's IP address. NAT distributes the responses to the proper IP addresses within your network.

Network A network consists of a collection of two or more devices, people, or components that communicate with each other over physical or virtual media. The most common types of network are:
LAN – (local area network): Computers are in close distance to one another. They are usually in the same office space, room, or building.
WAN – (wide area network): The computers are in different geographic locations and are connected by telephone lines or radio waves.

NWay Protocol A network protocol that can automatically negotiate the highest possible transmission speed between two devices.

P

PING

Packet Internet Groper, a utility used to determine whether a specific IP address is accessible. It functions by sending a packet to the specified address and waits for a reply. It is primarily used to troubleshoot Internet connections.

PPPoE

Point-to-Point Protocol over Ethernet. PPPoE is a specification for connecting the users on an Ethernet to the Internet through a common broadband medium, such as DSL or cable modem. All the users over the Ethernet share a common connection.

Protocol

Communication on the network is governed by sets of rules called protocols. Protocols provide the guidelines devices use to communicate with each other, and thus they have different functions. Some protocols are responsible for formatting and presenting and presenting data that will be transferred from file server memory to the file server's network adapter Others are responsible for filtering information between networks and forwarding data to its destination. Still other protocols dictate how data is transferred across the medium, and how servers respond to workstation requests and vice versa. Common network protocols responsible for the presentation and formatting of data for a network operating system are the Internetwork Packet Exchange (IPX) protocol or the Internet Protocol (IP). Protocols that dictate the format of data for transfers the medium include token-passing and Carrier Sense Multiple Access with Collision Detection (CSMA/CD), implemented as token-ring, ARCNET, FDDI, or Ethernet. The Router Information Protocol (RIP), a part of the Transmission Control Protocol/Internet Protocol (TCP/IP) suite, forwards packets from one network to another using the same network protocol.

R

RARP Reverse Address Resolution Protocol, a TCP/IP protocol that allows a physical address, such as an Ethernet address, to be translated into an IP address.

RJ-45 RJ-45 connector is used for Ethernet cable connections.

Router A router is the network software or hardware entity charged with routing packets between networks.

S

Server It is a simple computer that provides resources, such as files or other information.

SMTP The Simple Mail Transfer Protocol is used for Internet mail.

SNMP Simple Network Management Protocol. SNMP was designed to provide a common foundation for managing network devices.

Station In LANs, a station consists of a device that can communicate data on the network. In FDDI, a station includes both physical nodes and addressable logical devices. Workstations, single-attach stations, dual-attach stations, and concentrators are FDDI stations.

Subnet mask In TCP/IP, the bits used to create the subnet are called the subnet mask.

T

(TCP/IP) Transmission Control Protocol/Internet Protocol is a widely used

transport protocol that connects diverse computers of various transmission methods. It was developed by the Department of Defense to connect different computer types and led to the development of the Internet.

Transceiver A transceiver joins two network segments together. Transceivers can also be used to join a segment that uses one medium to a segment that uses a different medium. On a 10BASE-5 network, the transceiver connects the network adapter or other network device to the medium. Transceivers also can be used on 10BASE-2 or 10BASE-T networks to attach devices with AUI ports.

U

UDP The User Datagram Protocol is a connectionless protocol that resides above IP in the TCP/IP suite

ULP The upper-layer protocol refers to Application Layer protocols such as FTP,SNMP, and SMTP.

User Name The USERNAME is the unique name assigned to each person who has access to the LAN.

Utility It is a program that performs a specific task.

UTP Unshielded twisted-pair. UTP is a form of cable used by all access methods. It consists of several pairs of wires enclosed in an unshielded sheath.

W

WAN Wide-Area Network. A wide-area network consists of groups of interconnected computers that are separated by a wide distance and communicate with each other via common carrier

telecommunication techniques.

Windows

Windows is a graphical user interface for workstations that use DOS.

Workgroup

A workgroup is a group of users who are physically located together and connected to the same LAN, or a group of users who are scattered throughout an organization but are logically connected by work and are connected to the same network group.

Workstations

Workstation refers to the intelligent computer on the user's desktop. This computer may be an Intel-based PC, a Macintosh, or a UNIX-based workstation. The workstation is any intelligent device a user works from.