

## Short Depth USB HDMI DVI VGA Dual Rail LCD Console CL3800

- The CL3800 USB HDMI DVI VGA LCD Console is a short depth dual rail LCD KVM console featuring an 18.5" LED-backlit widescreen LCD monitor with an integrated keyboard and touchpad. The short-depth design fits all 19" equipment cabinets, and is especially suitable for shallow racks. In addition to saving valuable space on the rack, the CL3800 also provides a space-saving solution for special environments, such as outside broadcast vans (OB vans) and compact control rooms.

The CL3800 supports three types of video input – HDMI, DVI, and VGA – and provides the ultimate in installation flexibility by allowing users to connect the console and the computer via any of the three types of video source. The CL3800's full HD widescreen LCD monitor ensures excellent video quality and provides ample viewing area.

Furthermore, the dual rail design enables the LCD monitor, keyboard and touchpad to operate independently of each other. To maximize space utilization, the keyboard and touchpad modules can slide back to "hideaway" when not in use, while the thin profile LCD monitor rotates back, flush against the rack, to allow the convenient monitoring of computer activity.

For added convenience, users can choose to manage the computer from an external console. The CL3800 features a port for an external USB mouse on the unit's front panel, while ports for the second KVM console (USB keyboard/mouse and HDMI, DVI, or VGA monitor) are provided on the rear panel. The CL3800 also includes two mini stereo ports for connecting audio speakers.

With a rich feature set, the CL3800 is designed to exceed the requirements for space utility optimization, superior video quality, adaptive deployment, and operational versatility, and is ideal for applications such as mobile live streaming in the broadcasting sector or control rooms with limited space in any industry.

CL3800 Front view



CL3800 Rear view



## Features

### Space Utility Optimization

- Exclusive LED illumination light – designed by ATEN to illuminate the keyboard and touchpad to allow visibility in low-light conditions
- Integrated LCD KVM console with an 18.5" LED-backlit widescreen Full HD LCD monitor in a dual rail housing with top and bottom clearance for smooth operation in a 1U high system rack
- Short-depth design allows you to work with your rack-mounting equipment in narrow spaces
- Dual rail design allows LCD monitor and keyboard/touchpad modules to operate independently
- Console lock – enables the console drawer to remain securely locked away in position when not in use

### Remarkable Audio/Video Experience

- Support three types of video inputs – HDMI, DVI, and VGA\*
- 18.5" LCD screen with Full HD resolution of 1920 x 1080; the external console supports 1920 x 1200
- Audio support for connecting speakers

### Installation Flexibility

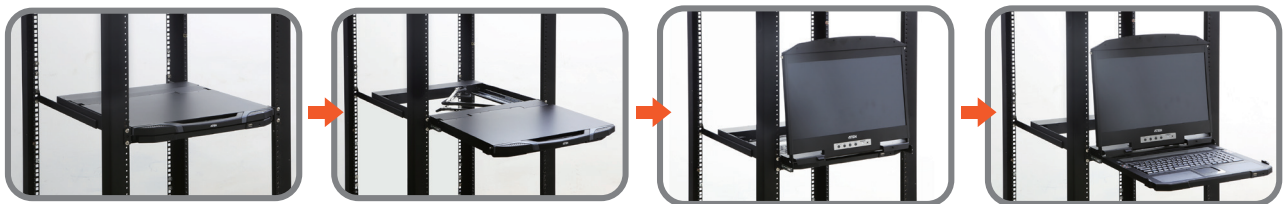
- Standard rack mount kit included
- Optional Easy Installation Rack Mounting Kit available\*\*
- No software required
- Firmware upgradable
- Supports hot-plugging

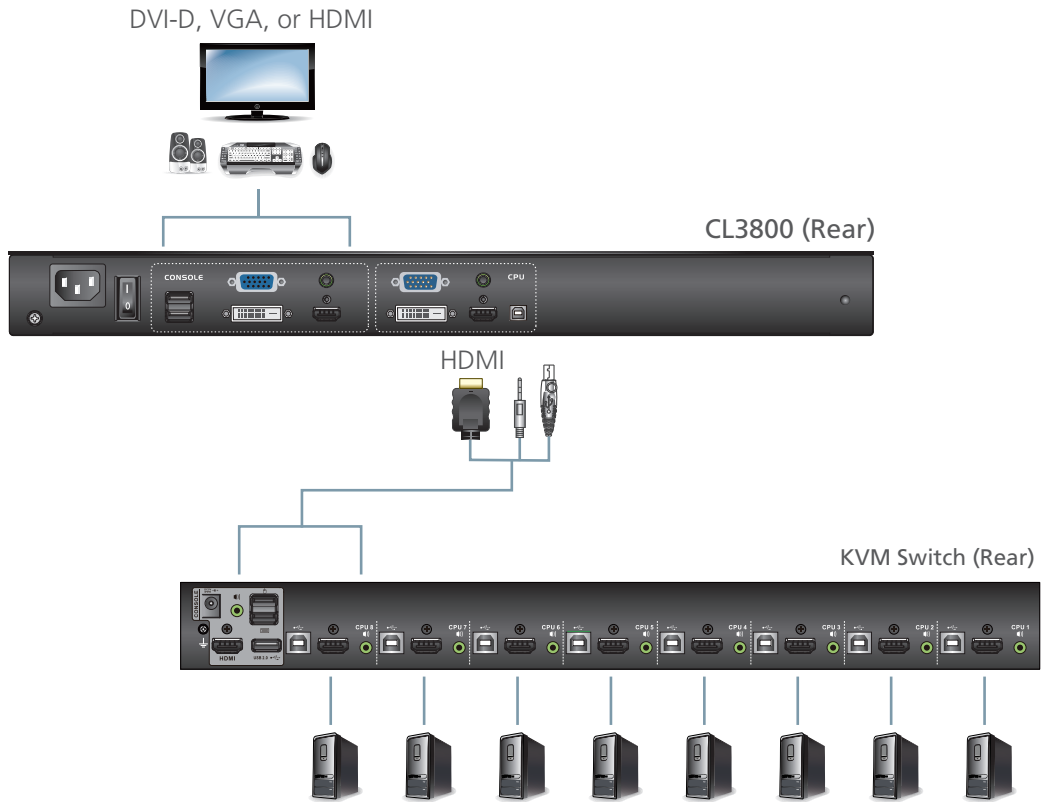
### Operational Versatility

- Supports an external console with USB / HDMI / DVI / VGA connectors\*
- Additional hot-pluggable USB mouse port on front panel (also functions as a USB peripheral port)
- Console selection via hotkey
- Standard 105-key keyboard
- Keyboard Language support: English(US), English(UK), French, German, German(Swiss), Greek, Hungarian, Italian, Japanese, Korean, Russian, Spanish, Swedish and Traditional Chinese

\* Only one video signal (HDMI, DVI-D, or VGA) can be displayed at time.

\*\* The Easy Installation Rack Mounting Kit is sold separately. Contact your ATEN dealer for product information





## Optional

### Single Person Easy Installation Kit

Slideaway™ LCD KVM switches allow you to choose from a host of optional rack mount kits to meet your needs, including the Single Person Easy Installation Rack Mount Kit, which streamlines the rack mounting process.

Normal rack mounting procedures call for at least two people to rack mount a KVM switch. The Single Person Easy Installation Rack Mount Kit enables one person to rack mount a Slideaway™ LCD KVM switch. In just a matter of minutes, your new Slideaway™ LCD KVM switch can go from the box to the rack.

For convenience and flexibility, there is one standard, and three optional rack mounting kits available:

Rack Mount Kit	Depth (cm)
<b>Short</b> (Standard)	47 - 75
<b>2X-040G</b> (Long / Optional)	70 - 100

Easy Installation Rack Mount Kit	Depth (cm)
<b>2X-041G</b> (Short / Optional)	45 - 70
<b>2X-042G</b> (Long / Optiona)	68 - 105

# Specifications

Function	CL3800NW
<b>Computer Connections</b>	
Direct	1
<b>Console Selection</b>	Hotkey
<b>Connectors</b>	
External Console Ports	1 x HDMI Female
	1 x DVI-D Female (White)
	1 x HDB-15 Female (Blue)
	2 x USB Type A Female
	1 x 3.5mm Audio Jack Female (Green)
KVM Ports	1 x HDMI Female
	1 x DVI-D Female (White)
	1 x HDB-15 Male (Blue)
	1 x USB Type B Female
	1 x 3.5mm Audio Jack Female (Green)
USB Port	1 x USB Type A Female
Firmware Upgrade	1 x 3.5 mm Audio Jack (Black)
Power	1 x 3-prong AC Socket
<b>Switches</b>	
Reset	1 x Semi-recessed Pushbutton
Firmware Upgrade	1 x Slide
Power	1 x Rocker
LCD Power	1 x Pushbutton
LCD Adjustment	4 x Pushbutton
<b>LEDs</b>	
Power	1 x KVM Console (Dark Green)
	1 x LCD (Orange)
Lock	1 x NumLock (Green)
	1 x CapsLock (Green)
	1 x ScrollLock (Green)
<b>Video</b>	
Input Video Resolution	1920 x 1200 @ 60 Hz, DDC2B
<b>Panel Spec</b>	
LCD Module	18.5" TFT-LCD
Resolution	1920 x 1080 @ 60 Hz
Pixel Pitch	0.213 mm x 0.213 mm
Response time	20 ms
Viewing Angle	178° (H), 178° (V)
Contrast Ratio	1000 : 1
Support Color	16.7M colors
Luminance	350 cd/m <sup>2</sup>
<b>Emulation</b>	
Keyboard / Mouse	USB
<b>Maximum Input Power Rating</b>	100 - 240V AC; 50 - 60Hz; 1A
<b>Power Consumption</b>	110V, 26.6W / 220V, 26.8W
<b>Environmental</b>	
Operating Temperature	0° to 40° C
Storage Temperature	-20° to 60° C
Humidity	0 - 80% RH, Non-condensing
<b>Physical Properties</b>	
Housing	Metal
Weight	9.61 kg
Dimensions (L x W x H)	48.06 x 51.42 x 4.28 cm

Product information is subject to change without prior notice.

## ATEN International Co., Ltd.

3F, No.125, Sec. 2, Datong Rd., Sijhih District., New Taipei City 221, Taiwan  
 Phone: 886-2-8692-6789 Fax: 886-2-8692-6767  
 www.aten.com E-mail: marketing@aten.com

Publish Date: 02/2018 V1.0



© Copyright 2018 ATEN® International Co., Ltd.  
 ATEN and the ATEN logo are trademarks of ATEN International Co., Ltd.  
 All rights reserved. All other trademarks are the property of their respective owners.